



**NORTH POINT
MINISTRIES**

**Financial Statements
March 31, 2008**

North Point Ministries, Inc.
Profit & Loss Statement
Summary for NPCC, Buckhead, Browns Bridge, Access, NPM, & Resources
Run On 4/5/2008

3 Months Ended 3/31/2008

	Current Month Actual	Current Month Budget	Month Variance	Year To Date Actual	Year To Date Budget	Year To Date Variance	% Diff	Annual Budget	Diff To Date	% Diff
Receipts										
Contributions-Alpharetta	2,033,816	1,826,127	207,689	4,912,566	5,191,319	(278,753)	-5.4%	23,500,000	(18,587,434)	-79.1%
Contributions-Buckhead	1,036,537	815,494	221,043	2,442,606	2,141,507	301,099	14.1%	11,000,000	(8,557,394)	-77.8%
Contributions-Browns Bridge	541,255	477,621	63,634	1,235,652	1,278,822	(43,170)	-3.4%	5,800,000	(4,564,348)	-78.7%
Resources Gross Profit	143,971	173,296	(29,325)	497,998	579,068	(81,070)	-14.0%	2,258,516	(1,760,518)	-78.0%
Total Receipts	3,755,579	3,292,538	463,041	9,088,822	9,190,716	(101,894)	-1.1%	42,558,516	(33,469,694)	-78.6%
Expenses										
Operating Expenses-Alpharetta	1,459,826	1,442,744	17,083	4,030,633	4,258,237	(227,604)	-5.3%	18,028,979	(13,998,346)	-77.6%
Operating Expenses-Buckhead	890,316	872,527	17,789	2,448,651	2,547,607	(98,956)	-3.9%	10,778,965	(8,330,314)	-77.3%
Operating Expenses-Browns Bridge	539,505	538,099	1,406	1,441,769	1,572,192	(130,422)	-8.3%	6,446,856	(5,005,087)	-77.6%
Operating Expenses-NPR	116,081	155,411	(39,330)	348,643	512,017	(163,374)	-31.9%	1,772,650	(1,424,007)	-80.3%
Expenses GF, BC, BB, NPR (Inc)/Exp	3,005,729	3,008,780	(3,052)	8,269,696	8,890,053	(620,356)	-7.0%	37,027,450	(28,757,754)	-77.7%
Income Allocation-NPM	852,613	852,613	-	2,557,839	2,557,839	-	0.0%	10,231,356	(7,673,517)	75.0%
Operating Expenses-NPM	827,755	973,189	(145,435)	2,279,827	2,807,923	(528,095)	-18.8%	11,730,677	(9,450,850)	-80.6%
Net NPM (Inc)/Exp	(24,858)	120,576	(145,435)	(278,012)	250,084	(528,095)	-211.2%	1,499,321	(1,777,333)	-118.5%
Operating Profit/(Loss) Before Access Fund	774,708	163,181	611,527	1,097,138	50,580	1,046,558	2069.1%	4,031,745	(2,934,607)	-72.8%
Other (Inc)Exp										
Other Income	(3,532)	-	(3,532)	(5,566)	-	(5,566)	0.0%	-	(5,566)	0.0%
Interest Income	-	-	-	(402)	-	(402)	0.0%	-	(402)	0.0%
Total Other (Inc)Exp	(3,532)	-	(3,532)	(5,968)	-	(5,968)	0.0%	-	(5,968)	0.0%
Net Profit/(Loss)	778,240	163,181	615,059	1,103,105	50,580	1,052,526	2080.9%	4,031,745	(2,928,640)	-72.6%
** Total Organization Operating Capital Expenditures Capital included in Operating Expense numbers above (excludes Access & NPR capital)	120,290	145,169	(24,878)	154,484	399,750	(245,266)	-61.4%	1,500,000	(1,345,516)	-89.7%
Access Fund-Contributions Alpharetta	11,065	-	11,065	25,977	-	25,977	0.0%	-	25,977	0.0%
Access Fund-Contributions Buckhead	87,513	-	87,513	138,626	-	138,626	0.0%	-	138,626	0.0%
Access Fund-Expenses	73,281	-	73,281	363,594	-	363,594	0.0%	-	363,594	0.0%
Net Access Fund Inc/(Loss)	25,297	-	25,297	(198,991)	-	(198,991)	0.0%	-	(198,991)	0.0%
Strategic Partnership Fund-Contributions	-	-	-	100,000	-	100,000	0.0%	-	100,000	0.0%
Strategic Partnership Fund-Expenses	29,496	-	29,496	80,996	-	80,996	0.0%	-	80,996	0.0%
Net Strategic Partnership Inc/(Loss)	(29,496)	-	(29,496)	19,004	-	19,004	0.0%	-	19,004	0.0%
NPP Expenses	2,300	-	2,300	2,300	-	2,300	0.0%	-	2,300	0.0%
Net NPP Inc/(Loss)	(2,300)	-	2,300	(2,300)	-	(2,300)	-	-	(2,300)	-

North Point Ministries, Inc.
Profit & Loss Statement
Summary for NPCC, Buckhead, Browns Bridge, Access, NPM, & Resources
Run On 4/5/2008

3 Months Ended 3/31/2008

	Actual			Budget									Total
	Jan	Feb	Mar	Apr	May	Jun	Jul	Aug	Sep	Oct	Nov	Dec	
Receipts													
Contributions-Alpharetta	1,250,875	1,627,875	2,033,816	1,733,665	1,707,318	1,787,090	1,679,133	1,792,560	1,701,128	1,822,979	1,956,183	4,128,625	23,221,247
Contributions-Buckhead	609,446	796,622	1,036,537	790,077	790,239	843,520	763,136	880,173	762,648	807,131	958,116	2,263,453	11,301,099
Contributions-Browns Bridge	288,703	405,694	541,255	418,996	406,103	456,523	423,774	522,382	470,728	465,962	556,337	800,373	5,756,830
Resources Gross Profit	176,970	177,058	143,971	172,440	220,504	152,112	137,608	203,892	205,616	166,464	202,688	218,124	2,177,446
Total Receipts	2,325,994	3,007,250	3,755,579	3,115,178	3,124,164	3,239,245	3,003,651	3,399,007	3,140,120	3,262,536	3,673,324	7,410,575	42,456,622
Expenses													
Operating Expenses-Alpharetta	1,170,919	1,399,888	1,459,826	1,439,995	1,692,782	1,523,700	1,439,553	1,509,362	1,494,084	1,394,778	1,660,278	1,616,212	17,801,375
Operating Expenses-Buckhead	709,013	849,322	890,316	878,426	995,683	841,951	827,142	930,420	882,994	859,471	1,010,110	1,005,161	10,680,009
Operating Expenses-Browns Bridge	384,271	517,993	539,505	507,947	599,186	538,566	509,033	520,354	515,496	516,923	582,493	584,667	6,316,434
Operating Expenses-NPR	98,969	133,593	116,081	169,080	155,484	149,738	102,911	137,387	113,903	120,260	136,680	175,193	1,609,276
Expenses GF, BC, BB, NPR (Inc)/Exp	2,363,172	2,900,796	3,005,729	2,995,447	3,443,134	3,053,954	2,878,638	3,097,522	3,006,476	2,891,431	3,389,560	3,381,233	36,407,094
Income Allocation-NPM	852,613	852,613	852,613	852,613	852,613	852,613	852,613	852,613	852,613	852,613	852,613	852,613	10,231,356
Operating Expenses-NPM	693,961	758,111	827,755	922,789	1,062,412	928,624	944,934	911,401	925,974	934,999	1,139,378	1,152,241	(9,260,130)
Net NPM (Inc)/Exp	(158,652)	(94,502)	(24,858)	70,176	209,799	76,011	92,321	58,788	73,361	82,386	286,765	299,628	(19,491,486)
Operating Profit/(Loss) Before Access Fund	121,473	200,956	774,708	49,554	(528,770)	109,279	32,691	242,696	60,282	288,718	(3,002)	3,729,715	25,541,015
Other (Inc)Exp													
Other Income	(2,034)	-	(3,532)	-	-	-	-	-	-	-	-	-	(5,566)
Interest Income	(402)	-	-	-	-	-	-	-	-	-	-	-	(402)
Total Other (Inc)Exp	(2,436)	-	(3,532)	-	-	-	-	-	-	-	-	-	(5,968)
Net Profit/(Loss)	123,909	200,956	778,240	49,554	(528,770)	109,279	32,691	242,696	60,282	288,718	(3,002)	3,729,715	25,546,983
** Total Organization Operating Capital Expenditures	(43,640)	77,834	120,290	116,667	121,667	126,667	130,667	116,667	116,667	116,667	116,667	137,916	1,254,734
<i>Capital included in Operating Expense numbers above (excludes Access & NPR capital)</i>													
Access Fund-Contributions Alpharetta	8,500	6,413	11,065	-	-	-	-	-	-	-	-	-	25,977
Access Fund-Contributions Buckhead	28,887	22,226	87,513	-	-	-	-	-	-	-	-	-	138,626
Access Fund-Expenses	108,834	181,478	73,281	-	-	-	-	-	-	-	-	-	363,594
Net Access Fund Inc/(Loss)	(71,448)	(152,840)	25,297	-	-	-	-	-	-	-	-	-	(198,991)
Strategic Partnership Fund-Contributions	100,000	-	-	-	-	-	-	-	-	-	-	-	100,000
Strategic Partnership Fund-Expenses	(16,649)	68,149	29,496	-	-	-	-	-	-	-	-	-	80,996
Net Strategic Partnership Inc/(Loss)	116,649	(68,149)	(29,496)	-	-	-	-	-	-	-	-	-	19,004
NPP Expenses	-	-	2,300	-	-	-	-	-	-	-	-	-	2,300
Net NPP Inc/(Loss)	-	-	(2,300)	-	-	-	-	-	-	-	-	-	(2,300)



North Point Community Church
Departmental Profit & Loss Statement
Run On 4/5/2008
3 Months Ended 3/31/2008

	Current Month Actual	Current Month Budget	Month Variance	Year To Date Actual	Year To Date Budget	Year To Date Variance	% Diff	Annual Budget	Diff To Date	% Diff
Receipts										
Contributions	2,018,480	1,826,127	192,353	4,862,702	5,191,319	(328,617)	-6.3%	23,500,000	(18,637,298)	-79.3%
Contributions - Missions	15,337	-	15,337	49,839	-	49,839	0.0%	-	49,839	0.0%
Total Receipts	2,033,816	1,826,127	207,689	4,912,541	5,191,319	(278,778)	-5.4%	23,500,000	(18,587,459)	-79.1%
Department Expenses										
Preschool	19,837	15,675	4,162	30,877	41,547	(10,670)	-25.7%	201,452	(170,575)	-84.7%
Weekday Preschool	18,871	21,849	(2,978)	49,760	65,085	(15,325)	-23.5%	309,174	(259,414)	-83.9%
Upstreet Kids	17,060	15,921	1,139	42,112	50,603	(8,490)	-16.8%	266,814	(224,702)	-84.2%
Kidstuf	14,589	15,839	(1,250)	34,703	45,022	(10,319)	-22.9%	176,280	(141,577)	-80.3%
Middle School	35,628	15,845	19,783	53,594	52,835	760	1.4%	236,826	(183,232)	-77.4%
High School	11,395	13,574	(2,179)	34,712	38,325	(3,613)	-9.4%	239,892	(205,180)	-85.5%
Family Ministry Dept	871	7,850	(6,979)	10,754	14,088	(3,334)	-23.7%	80,204	(69,450)	-86.6%
Family Ministry Div-Salary/Benefits	125,722	135,331	(9,608)	369,242	405,992	(36,750)	-9.1%	1,744,032	(1,374,790)	-78.8%
Married Life	2,339	-	2,339	25,626	17,725	7,901	44.6%	103,195	(77,569)	-75.2%
College	339	-	339	933	-	933	0.0%	-	933	0.0%
Singles	4,410	19,414	(15,004)	25,150	41,014	(15,863)	-38.7%	189,468	(164,318)	-86.7%
722	195	-	195	195	-	195	0.0%	-	195	0.0%
CG-Ladies Link	2,149	2,860	(711)	4,379	6,853	(2,474)	-36.1%	34,700	(30,321)	-87.4%
CG-Marrieds	4,338	5,346	(1,008)	10,411	14,702	(4,290)	-29.2%	64,152	(53,741)	-83.8%
CG-College/Singles	3,215	2,998	217	4,590	8,245	(3,654)	-44.3%	36,697	(32,107)	-87.5%
CG-Assimilation	9,340	12,501	(3,161)	35,080	41,540	(6,459)	-15.5%	109,760	(74,680)	(1)
GL Training & Resources	519	-	519	1,834	-	1,834	0.0%	-	1,834	-
Starting Point	9,855	7,931	1,924	12,506	14,985	(2,479)	-16.5%	52,272	(39,766)	-76.1%
Group Life Administration	26,301	20,668	5,633	61,829	56,837	4,992	8.8%	248,016	(186,187)	-75.1%
Care Ministry	16,674	15,017	1,657	32,197	33,989	(1,792)	-5.3%	174,571	(142,374)	-81.6%
Membership Dev. Admin/Assim	31	914	(883)	447	1,639	(1,192)	-72.7%	6,554	(6,107)	(1)
Group Life Div-Salary/Benefits	184,997	193,643	(8,646)	571,738	580,928	(9,191)	-1.6%	2,504,994	(1,933,256)	-77.2%
Worship	49,755	25,931	23,824	67,606	71,310	(3,705)	-5.2%	311,172	(243,566)	-78.3%
Music	29,277	23,985	5,292	71,464	65,959	5,505	8.3%	287,820	(216,356)	-75.2%
Worship Production	23,752	20,516	3,236	57,022	64,669	(7,647)	-11.8%	267,189	(210,167)	-78.7%
Host	25,527	23,569	1,958	56,703	53,754	2,950	5.5%	243,020	(186,317)	-76.7%
SPD-Salary/Benefits	94,306	107,538	(13,232)	288,918	322,613	(33,695)	-10.4%	1,393,240	(1,104,322)	-79.3%
Globalx Contribution	138,190	138,190	-	414,570	414,570	-	0.0%	1,658,280	(1,243,710)	-75.0%
Administration	364,313	358,375	5,938	1,081,063	1,075,125	5,938	0.6%	4,300,500	(3,219,437)	-74.9%
Facilities	114,930	118,168	(3,238)	341,448	350,398	(8,950)	-2.6%	1,467,913	(1,126,465)	-76.7%
Administrative-Salary/Benefits	58,854	54,797	4,057	167,929	164,390	3,539	2.2%	720,792	(552,863)	-76.7%
Total Operating Expenses	1,407,582	1,394,244	13,338	3,959,392	4,114,737	(155,345)	-3.8%	17,428,979	(13,469,587)	-77.3%
Capital Expenditures	52,245	48,500	3,745	71,241	143,500	(72,259)	-50.4%	600,000	(528,759)	-88.1%
Operating Profit	573,990	383,383	190,607	881,908	933,082	(51,174)	-5.5%	5,471,021	(4,589,113)	-83.9%
Other Income & Expense										
Other Income	(3,532)	-	(3,532)	(5,566)	-	(5,566)	0.0%	-	(5,566)	0.0%
Interest Income	-	-	-	(402)	-	(402)	0.0%	-	(402)	0.0%
Total Other Income & Expense	(3,532)	-	(3,532)	(5,968)	-	(5,968)	0.0%	-	(5,968)	0.0%
Net Profit / Loss	577,522	383,383	194,139	887,876	933,082	(45,206)	-4.8%	5,471,021	(4,583,145)	-83.8%

North Point Community Church
Profit & Loss Statement
Run On 4/5/2008
3 Months Ended 3/31/2008

	Current Month Actual	Current Month Budget	Month Variance	Year To Date Actual	Year To Date Budget	Year To Date Variance	% Diff	Annual Budget	Diff To Date	% Diff
Receipts :										
Contributions	2,018,480	1,826,127	192,353	4,862,702	5,191,319	(328,617)	6.3%	23,500,000	(18,637,298)	79.3%
Contributions - Missions	15,337	-	15,337	49,839	-	49,839	0.0%	-	49,839	0.0%
Contributions-Be Rich Initiative	-	-	-	25	-	25	0.0%	-	25	0.0%
Total Receipts	2,033,816	1,826,127	207,689	4,912,566	5,191,319	(278,753)	5.4%	23,500,000	(18,587,434)	79.1%
Expenses :										
Preschool										
Postage	98	1,000	(902)	98	1,438	(1,340)	-93.2%	6,000	(5,902)	-98.4%
Printing	2,729	2,000	729	2,729	3,313	(583)	-17.6%	14,000	(11,271)	-80.5%
Honorariums	-	983	(983)	50	2,703	(2,653)	-98.2%	11,800	(11,750)	-99.6%
Departmental Supplies	4,040	5,000	(960)	9,196	13,750	(4,554)	-33.1%	60,000	(50,804)	-84.7%
Volunteer Development	4,701	2,500	2,201	7,022	6,350	672	10.6%	35,000	(27,978)	-79.9%
Leadership Development	1,895	500	1,395	1,987	675	1,312	194.4%	17,000	(15,013)	-88.3%
Curriculum	2,968	1,917	1,051	5,207	5,272	(65)	-1.2%	23,000	(17,793)	-77.4%
Staff Development	210	275	(65)	550	2,050	(1,500)	-73.2%	10,152	(9,602)	-94.6%
Baby Dedication	2,981	1,000	1,981	3,615	2,750	865	31.5%	12,000	(8,385)	-69.9%
Resources	-	333	(333)	-	916	(916)	-100.0%	4,000	(4,000)	-100.0%
Childcare Contractual	216	167	49	423	456	(33)	-7.3%	2,000	(1,577)	-78.9%
Leadership Retreat	-	-	-	-	1,875	(1,875)	-100.0%	6,500	(6,500)	-100.0%
Total Preschool	19,837	15,675	4,162	30,877	41,547	(10,670)	-25.7%	201,452	(170,575)	-84.7%
Weekday Preschool										
PS Weekday - Teacher Salary	28,392	29,212	(820)	80,295	87,636	(7,341)	-8.4%	379,756	(299,461)	-78.9%
Employer Expenses	2,027	2,235	(208)	5,797	6,705	(908)	-13.5%	29,054	(23,257)	-80.0%
Workers' Compensation	176	176	-	528	528	-	0.0%	2,112	(1,584)	-75.0%
Group Medical Insurance	3,234	3,290	(56)	9,702	9,871	(169)	-1.7%	39,482	(29,780)	-75.4%
Disability Insurance	62	4	58	61	12	49	406.3%	52	9	16.8%
403(b) Matching	-	132	(132)	-	396	(396)	-100.0%	1,718	(1,718)	-100.0%
Departmental Supplies	1,146	1,000	146	3,980	3,000	980	32.7%	16,000	(12,020)	-75.1%
Leadership Development	34	500	(466)	65	875	(810)	-92.6%	7,250	(7,185)	-99.1%
Income	(16,494)	(15,000)	(1,494)	(51,742)	(45,000)	(6,742)	15.0%	(180,000)	128,258	-71.3%
Hiring Expense	-	-	-	-	150	(150)	-100.0%	850	(850)	-100.0%
Special Events	295	300	(6)	1,075	913	163	17.8%	9,700	(8,625)	-88.9%
Summer Camp	-	-	-	-	-	-	0.0%	3,200	(3,200)	-100.0%
Total Weekday Preschool	18,871	21,849	(2,978)	49,760	65,085	(15,325)	-23.5%	309,174	(259,414)	-83.9%
Upstreet Kids										
Postage	1,712	1,200	512	1,712	1,826	(114)	-6.2%	12,300	(10,588)	-86.1%
Printing	1,601	1,400	201	3,787	3,250	537	16.5%	17,500	(13,713)	-78.4%
Honorariums	2,984	3,000	(16)	5,736	9,250	(3,514)	-38.0%	46,320	(40,584)	-87.6%
Departmental Supplies	6,603	4,978	1,625	13,671	13,690	(18)	-0.1%	68,800	(55,129)	-80.1%
Volunteer Development	2,134	1,690	444	6,499	3,440	3,059	88.9%	33,490	(26,991)	-80.6%
Leadership Development	183	1,000	(817)	183	1,000	(817)	-81.7%	10,000	(9,817)	-98.2%
Curriculum	-	167	(167)	-	459	(459)	-100.0%	2,004	(2,004)	-100.0%
Staff Development	92	400	(308)	1,887	3,050	(1,163)	-38.1%	12,200	(10,313)	-84.5%
Departmental Equipment	100	-	100	100	-	100	0.0%	-	100	0.0%
Resources	-	450	(450)	202	1,238	(1,036)	-83.7%	5,400	(5,198)	-96.3%

	Current Month Actual	Current Month Budget	Month Variance	Year To Date Actual	Year To Date Budget	Year To Date Variance	% Diff	Annual Budget	Diff To Date	% Diff
Kidventure	178	-	178	3,872	8,000	(4,128)	-51.6%	12,000	(8,128)	-67.7%
Seasonal Decorations	-	-	-	140	-	140	0.0%	2,000	(1,860)	-93.0%
Family B'day Celebration	222	-	222	791	900	(109)	-12.1%	4,800	(4,009)	-83.5%
Summer Craze	-	-	-	-	-	-	0.0%	15,000	(15,000)	-100.0%
Staff Retreat	-	-	-	112	-	112	0.0%	-	112	0.0%
Large Group Production	1,251	1,636	(385)	3,420	4,501	(1,080)	-24.0%	25,000	(21,580)	-86.3%
Total Upstreet Kids	17,060	15,921	1,139	42,112	50,603	(8,490)	-16.8%	266,814	(224,702)	-84.2%
Kidstuf										
Giveaways	-	-	-	92	-	92	0.0%	-	92	0.0%
Postage	4	-	4	51	188	(137)	-73.1%	1,152	(1,102)	-95.6%
Printing	-	-	-	297	825	(528)	-64.0%	3,204	(2,907)	-90.7%
Honorariums	6,857	10,105	(3,248)	18,160	27,789	(9,629)	-34.7%	101,052	(82,892)	-82.0%
Supplies	597	783	(186)	1,619	2,153	(535)	-24.8%	9,396	(7,777)	-82.8%
Volunteer Development	2,958	2,050	908	7,161	6,088	1,073	17.6%	30,660	(23,499)	-76.6%
Staff Development	116	42	74	518	116	402	348.3%	504	14	2.7%
Departmental Equipment	86	-	86	257	-	257	0.0%	-	257	0.0%
Resources Expense	4	-	4	4	-	4	0.0%	-	4	0.0%
Props & Decor	1,082	1,825	(743)	2,523	5,021	(2,498)	-49.7%	18,252	(15,729)	-86.2%
Design	-	175	(175)	238	481	(244)	-50.6%	1,752	(1,515)	-86.4%
Technical	2,886	859	2,027	3,786	2,362	1,424	60.3%	10,308	(6,522)	-63.3%
Total Kidstuf	14,589	15,839	(1,250)	34,703	45,022	(10,319)	-22.9%	176,280	(141,577)	-80.3%
Family Ministry										
Strategic Service Awards										
Total Strategic Service Awards	-	-	-	-	-	-	0.0%	-	-	0.0%
SGL Printing/Postage/Signage	136	-	136	136	-	136	0.0%	-	136	0.0%
SGL Other Event Expense	17	-	17	39	-	39	0.0%	-	39	0.0%
Printing	1,400	-	1,400	1,400	-	1,400	0.0%	-	1,400	0.0%
Departmental Supplies	37	-	37	92	-	92	0.0%	-	92	0.0%
Telephone/Cell	1,687	600	1,087	2,531	1,650	881	53.4%	7,200	(4,669)	-64.8%
Mileage	351	250	101	942	688	255	37.0%	3,000	(2,058)	-68.6%
Staff Development	195	-	195	239	-	239	0.0%	-	239	0.0%
Vol. Recognition	157	6,000	(5,843)	157	6,000	(5,843)	-97.4%	38,004	(37,847)	-99.6%
B'day Celebrations	-	-	-	4,029	3,000	1,029	34.3%	20,000	(15,971)	-79.9%
Volunteer Screening	650	1,000	(350)	1,188	2,750	(1,562)	-56.8%	12,000	(10,812)	-90.1%
Staff Retreat	(3,760)	-	(3,760)	-	-	-	0.0%	-	-	0.0%
Total Family Ministry Department	871	7,850	(6,979)	10,754	14,088	(3,334)	-23.7%	80,204	(69,450)	-86.6%
Total Family Ministry - Children	71,229	77,134	(5,905)	168,206	216,344	(48,138)	-22.3%	1,033,924	(865,718)	-83.7%
6th Grade										
6th Grade Camp										
Total 6th Grade Camp	-	-	-	-	-	-	0.0%	-	-	0.0%
6th Grade - Vertical Reality										
Total 6th Grade - Vertical Reality	-	-	-	-	-	-	0.0%	-	-	0.0%
Total 6th Grade	-	-	-	-	-	-	0.0%	-	-	0.0%
Junior High School										
Postage	614	166	448	614	458	156	34.2%	2,000	(1,386)	-69.3%
Printing	85	2,441	(2,356)	85	6,213	(6,128)	-98.6%	11,300	(11,215)	-99.2%
Honorariums	9,014	6,208	2,806	23,537	17,072	6,465	37.9%	74,496	(50,959)	-68.4%
Departmental Supplies	3,345	1,863	1,482	7,437	5,123	2,313	45.2%	22,356	(14,919)	-66.7%
Volunteer Development	941	2,908	(1,967)	3,779	7,997	(4,218)	-52.7%	34,896	(31,117)	-89.2%

BUCKHEAD
CHURCH

Buckhead Church
Departmental Profit & Loss Statement
Run On 4/5/2008
3 Months Ended 3/31/2008

	Current Month Actual	Current Month Budget	Month Variance	Year To Date Actual	Year To Date Budget	Year To Date Variance	% Diff	Annual Budget	Diff To Date	% Diff
Receipts										
Contributions	1,036,537	815,494	221,043	2,442,606	2,141,507	301,099	14.1%	11,000,000	(8,557,394)	-77.8%
Total Receipts	1,036,537	815,494	221,043	2,442,606	2,141,507	301,099	14.1%	11,000,000	(8,557,394)	-77.8%
Department Expenses										
Preschool	9,576	6,649	2,927	18,003	19,185	(1,182)	-6.2%	80,988	(62,985)	-77.8%
Weekday Preschool	8,180	4,675	3,505	16,967	15,235	1,732	11.4%	69,964	(52,997)	-75.7%
Upstreet Kids	4,901	6,896	(1,995)	12,867	21,471	(8,604)	-40.1%	100,001	(87,134)	-87.1%
Kidstuf	10,524	12,121	(1,597)	29,729	33,338	(3,609)	-10.8%	122,200	(92,471)	-75.7%
Middle School	8,409	7,410	999	27,754	25,135	2,620	10.4%	106,331	(78,577)	-73.9%
High School	8,799	10,887	(2,088)	23,850	29,939	(6,089)	-20.3%	130,644	(106,794)	-81.7%
Family Ministry Dept	2,052	2,424	(372)	5,147	6,672	(1,525)	-22.9%	29,096	(23,949)	-82.3%
Married Life	1,853	182	1,671	14,170	10,203	3,967	38.9%	42,492	(28,322)	-66.7%
College	11,786	12,744	(958)	35,082	35,096	(14)	0.0%	135,608	(100,526)	-74.1%
Singles	7,602	8,242	(640)	29,086	27,791	1,296	4.7%	145,904	(116,818)	-80.1%
722	41,568	23,027	18,541	78,936	81,106	(2,169)	-2.7%	274,632	(195,696)	-71.3%
CG-Ladies Link	517	794	(277)	886	1,619	(732)	-45.3%	8,828	(7,942)	-90.0%
CG-Marrieds	892	2,832	(1,940)	1,615	6,869	(5,255)	-76.5%	31,680	(30,065)	-94.9%
CG-College/Singles	1,798	4,379	(2,581)	5,108	8,962	(3,854)	-43.0%	50,868	(45,760)	-90.0%
CG-Assimilation	6,932	20,722	(13,790)	34,212	52,938	(18,726)	-35.4%	146,580	(112,368)	(1)
GL Training & Resources	-	-	-	-	-	-	0.0%	-	-	-
Starting Point	8,019	6,100	1,919	9,064	9,690	(626)	-6.5%	29,380	(20,316)	-69.2%
Group Life Administration	14,474	5,175	9,299	25,556	14,231	11,325	79.6%	62,100	(36,544)	-58.8%
Care Ministry	4,528	2,149	2,379	7,800	13,785	(5,985)	-43.4%	97,513	(89,713)	-92.0%
Membership Dev. Admin/Assim	125	915	(790)	367	1,641	(1,274)	-77.6%	6,566	(6,199)	(1)
Worship	42,853	30,618	12,235	72,209	68,398	3,812	5.6%	301,214	(229,005)	-76.0%
Music	18,770	18,994	(224)	45,513	52,234	(6,721)	-12.9%	227,928	(182,415)	-80.0%
Worship Production	6,096	9,233	(3,137)	23,428	25,199	(1,771)	-7.0%	128,940	(105,512)	-81.8%
Host	30,965	28,447	2,518	79,577	76,132	3,445	4.5%	319,134	(239,557)	-75.1%
Missions	64,685	64,685	-	194,055	194,055	-	0.0%	776,220	(582,165)	-75.0%
Campus Director Dept	11,903	5,333	6,570	19,591	14,666	4,926	33.6%	63,996	(44,405)	(1)
Administration/IT	182,997	182,937	60	534,213	545,821	(11,607)	-2.1%	2,201,483	(1,667,270)	-75.7%
Facilities	72,539	78,396	(5,857)	195,757	211,602	(15,845)	-7.5%	1,019,763	(824,006)	-80.8%
BC-Salary/Benefits	306,974	307,227	(253)	908,109	921,682	(13,572)	-1.5%	3,968,912	(3,060,803)	-77.1%
Total Operating Expenses	890,316	864,194	26,123	2,448,651	2,524,690	(76,040)	-3.0%	10,678,965	(8,230,314)	-77.1%
Capital Expenditures	-	8,333	(8,333)	-	22,917	(22,917)	-100.0%	100,000	(100,000)	-100.0%
Operating Profit	146,221	(57,033)	203,254	(6,045)	(406,100)	400,055	-98.5%	221,035	(227,080)	-102.7%
Other Income & Expense										
Total Other Income & Expense	-	-	-	-	-	-	0.0%	-	-	0.0%
Net Profit / Loss	146,221	(57,033)	203,254	(6,045)	(406,100)	400,055	-98.5%	221,035	(227,080)	-102.7%

Buckhead Church
Profit & Loss Statement
 Run On 4/5/2008
 3 Months Ended 3/31/2008

	Current Month Actual	Current Month Budget	Month Variance	Year To Date Actual	Year To Date Budget	Year To Date Variance	% Diff	Annual Budget	Diff To Date	% Diff
Income										
Contributions	1,036,537	815,494	221,043	2,442,606	2,141,507	301,099	14.1%	11,000,000	8,557,394	-77.8%
Income	1,036,537	815,494	221,043	2,442,606	2,141,507	301,099	14.1%	11,000,000	8,557,394	-77.8%
Expenses										
Preschool										
Postage	-	83	(83)	-	228	(228)	-100.0%	996	(996)	-100.0%
Printing	906	430	476	1,643	1,183	461	39.0%	5,160	(3,517)	-68.2%
Honorariums	-	916	(916)	-	2,519	(2,519)	-100.0%	10,992	(10,992)	-100.0%
Departmental Supplies	3,330	1,806	1,524	5,641	4,967	675	13.6%	21,672	(16,031)	-74.0%
Volunteer Development	1,345	1,498	(153)	4,305	4,120	185	4.5%	17,976	(13,671)	-76.1%
Leadership Development	200	300	(100)	263	825	(562)	-68.1%	3,600	(3,337)	-92.7%
Curriculum	467	750	(283)	985	2,063	(1,077)	-52.2%	9,000	(8,015)	-89.1%
Contract Labor	725	-	725	1,325	-	1,325	0.0%	-	1,325	0.0%
Staff Development	455	171	284	998	470	528	112.2%	2,052	(1,054)	-51.4%
Departmental Equipment	27	30	(3)	27	83	(55)	-67.1%	360	(333)	-92.5%
Staff Retreat	-	75	(75)	-	206	(206)	-100.0%	900	(900)	-100.0%
Seasonal Decorations	-	43	(43)	62	118	(56)	-47.3%	516	(454)	-87.9%
Baby Dedication	2,120	500	1,620	2,753	1,375	1,378	100.2%	6,000	(3,247)	-54.1%
Tape Resources	-	30	(30)	-	83	(83)	-100.0%	360	(360)	-100.0%
Contractual Childcare	-	17	(17)	-	47	(47)	-100.0%	204	(204)	-100.0%
Leadership Retreat	-	-	-	-	900	(900)	-100.0%	1,200	(1,200)	-100.0%
Total Preschool	9,576	6,649	2,927	18,003	19,185	(1,182)	-6.2%	80,988	(62,985)	-77.8%
Weekday Preschool										
Preschool Weekday Teacher Sala	8,283	7,076	1,207	23,800	21,228	2,572	12.1%	91,990	(68,190)	-74.1%
Employer Expenses	627	646	(19)	1,797	1,938	(141)	-7.3%	8,400	(6,603)	-78.6%
Workers Compensation	-	47	(47)	-	141	(141)	-100.0%	610	(610)	-100.0%
Group Medical Insurance	-	833	(833)	-	2,500	(2,500)	-100.0%	9,998	(9,998)	-100.0%
Departmental Supplies	405	250	155	749	688	61	8.9%	3,000	(2,251)	-75.0%
Preschool Weekday Leadership D	265	182	83	265	501	(236)	-47.1%	2,184	(1,919)	-87.9%
Income	(3,629)	(4,490)	861	(12,353)	(12,120)	(233)	1.9%	(48,790)	36,437	-74.7%
Preschool Weekday Hiring Expen	1,905	131	1,774	2,385	360	2,025	562.0%	1,572	813	51.7%
Preschool Weekday Special Even	324	-	324	324	-	324	0.0%	1,000	(676)	-67.6%
Total Weekday Preschool	8,180	4,675	3,505	16,967	15,235	1,732	11.4%	69,964	(52,997)	-75.7%
Upstreet Kids										
Postage	440	333	107	440	919	(480)	-52.2%	4,000	(3,560)	-89.0%
Printing	1,004	667	337	1,604	1,831	(227)	-12.4%	8,000	(6,396)	-80.0%
Honorariums	530	1,103	(573)	1,660	3,033	(1,373)	-45.3%	13,236	(11,576)	-87.5%
Departmental Supplies	2,442	1,833	609	4,702	5,044	(342)	-6.8%	22,000	(17,298)	-78.6%
Volunteer Development	900	948	(48)	2,106	2,611	(505)	-19.3%	11,380	(9,274)	-81.5%
Leadership Development	-	381	(381)	-	1,050	(1,050)	-100.0%	4,565	(4,565)	-100.0%
Curriculum	60	125	(65)	60	344	(283)	-82.4%	1,500	(1,440)	-96.0%

	Current Month Actual	Current Month Budget	Month Variance	Year To Date Actual	Year To Date Budget	Year To Date Variance	% Diff	Annual Budget	Diff To Date	% Diff
Staff Development	8	417	(409)	277	1,143	(866)	-75.7%	5,000	(4,723)	-94.5%
Departmental Equipment	50	-	50	50	-	50	0.0%	-	50	0.0%
Tape Resources	-	89	(89)	-	246	(246)	-100.0%	1,070	(1,070)	-100.0%
Kid Venture	(1,375)	-	(1,375)	476	2,500	(2,024)	-81.0%	5,500	(5,024)	-91.4%
Seasonal Decorations	-	-	-	-	-	-	0.0%	1,000	(1,000)	-100.0%
Family B'day Celebration	404	-	404	404	-	404	0.0%	-	404	0.0%
Family Birthday Celebration	-	250	(250)	-	688	(688)	-100.0%	3,000	(3,000)	-100.0%
Summer Craze	-	-	-	-	-	-	0.0%	8,750	(8,750)	-100.0%
Leadership Retreat	-	-	-	-	-	-	0.0%	2,000	(2,000)	-100.0%
Large Group Production	438	750	(312)	1,088	2,063	(975)	-47.3%	9,000	(7,912)	-87.9%
Total Upstreet Kids	4,901	6,896	(1,995)	12,867	21,471	(8,604)	-40.1%	100,001	(87,134)	-87.1%
Kidstuff										
Postage	-	54	(54)	-	150	(150)	-100.0%	650	(650)	-100.0%
Printing	-	84	(84)	92	231	(140)	-60.4%	1,000	(909)	-90.9%
Honorariums	7,124	8,600	(1,476)	21,310	23,650	(2,340)	-9.9%	77,400	(56,090)	-72.5%
Supplies	663	447	216	1,705	1,229	475	38.7%	4,250	(2,545)	-59.9%
Volunteer Development	1,056	557	499	2,764	1,532	1,232	80.4%	13,500	(10,736)	-79.5%
Leadership Development	-	-	-	41	-	41	0.0%	-	41	0.0%
Staff Development	29	216	(187)	374	594	(220)	-37.1%	2,600	(2,226)	-85.6%
Departmental Equipment	1,131	-	1,131	1,655	-	1,655	0.0%	-	1,655	0.0%
Props & Decor	521	1,263	(742)	1,789	3,473	(1,684)	-48.5%	12,000	(10,211)	-85.1%
Design	-	83	(83)	-	232	(232)	-100.0%	1,000	(1,000)	-100.0%
Technical	-	817	(817)	-	2,247	(2,247)	-100.0%	9,800	(9,800)	-100.0%
Total Kidstuff	10,524	12,121	(1,597)	29,729	33,338	(3,609)	-10.8%	122,200	(92,471)	-75.7%
Middle School										
Postage	-	4	(4)	-	11	(11)	-100.0%	48	(48)	-100.0%
Honorariums	5,030	5,156	(126)	15,423	14,179	1,244	8.8%	61,872	(46,449)	-75.1%
Departmental Supplies	1,213	1,000	213	3,198	2,750	448	16.3%	12,000	(8,802)	-73.4%
Volunteer Development	365	583	(218)	533	1,603	(1,070)	-66.7%	6,996	(6,463)	-92.4%
Staff Development	131	250	(119)	258	688	(430)	-62.5%	3,000	(2,742)	-91.4%
Jr. High Camp Income	-	-	-	(325)	-	(325)	0.0%	-	(325)	0.0%
WWW Income	-	-	-	(100)	-	(100)	0.0%	-	(100)	0.0%
WWW Expense	1,259	-	1,259	7,876	4,757	3,119	65.6%	4,757	3,119	65.6%
6th Grade Camp Expense	-	-	-	-	-	-	0.0%	2,004	(2,004)	-100.0%
Small Grp Ldr Conf.	-	-	-	-	-	-	0.0%	1,800	(1,800)	-100.0%
Middle School Event Budget	192	-	192	192	-	192	0.0%	-	192	0.0%
Student Food	220	417	(197)	699	1,147	(448)	-39.0%	5,004	(4,305)	-86.0%
VR78 Expense	-	-	-	-	-	-	0.0%	8,850	(8,850)	-100.0%
Total Middle School	8,409	7,410	999	27,754	25,135	2,620	10.4%	106,331	(78,577)	-73.9%
High School										
Student Impact Printing	-	33	(33)	-	91	(91)	-100.0%	396	(396)	-100.0%
Student Impact Supplies	-	100	(100)	-	275	(275)	-100.0%	1,200	(1,200)	-100.0%
Postage	-	71	(71)	-	195	(195)	-100.0%	852	(852)	-100.0%
Printing	-	208	(208)	-	572	(572)	-100.0%	2,496	(2,496)	-100.0%
Honorariums	6,677	4,333	2,344	17,285	11,916	5,370	45.1%	51,996	(34,711)	-66.8%
Departmental Supplies	535	917	(382)	1,097	2,522	(1,425)	-56.5%	11,004	(9,907)	-90.0%
Volunteer Development	55	292	(237)	186	803	(617)	-76.9%	3,504	(3,318)	-94.7%
Curriculum	9	-	9	9	-	9	0.0%	-	9	0.0%
Staff Development	106	167	(61)	497	459	37	8.2%	2,004	(1,507)	-75.2%

	Current Month Actual	Current Month Budget	Month Variance	Year To Date Actual	Year To Date Budget	Year To Date Variance	% Diff	Annual Budget	Diff To Date	% Diff
Small Grp Ldr Conf.	-	150	(150)	-	413	(413)	-100.0%	1,800	(1,800)	-100.0%
Sr. High Camp Expense	-	2,167	(2,167)	-	5,959	(5,959)	-100.0%	26,004	(26,004)	-100.0%
WWW Expense	(1,577)	75	(1,652)	(1,300)	206	(1,506)	-730.3%	900	(2,200)	-244.4%
Vertical Reality Expense	-	583	(583)	-	1,603	(1,603)	-100.0%	6,996	(6,996)	-100.0%
Inside/Out Food/Drink	1,267	958	309	2,387	2,635	(247)	-9.4%	11,496	(9,109)	-79.2%
Attic Tech Supplies	1,728	833	895	3,690	2,291	1,399	61.1%	9,996	(6,306)	-63.1%
Total High School	8,799	10,887	(2,088)	23,850	29,939	(6,089)	-20.3%	130,644	(106,794)	-81.7%
Family Ministry Department										
Printing	-	208	(208)	-	575	(575)	-100.0%	2,500	(2,500)	-100.0%
Departmental Supplies	-	236	(236)	72	648	(575)	-88.8%	2,830	(2,758)	-97.4%
Telephone/Cell	538	458	80	1,613	1,263	351	27.8%	5,500	(3,887)	-70.7%
Mileage	61	106	(45)	261	290	(29)	-10.0%	1,270	(1,009)	-79.5%
Staff Development	92	333	(241)	368	916	(548)	-59.8%	3,996	(3,628)	-90.8%
Vol. Recognition	-	250	(250)	63	688	(624)	-90.8%	3,000	(2,937)	-97.9%
B'day Celebrations	-	500	(500)	699	1,375	(676)	-49.2%	6,000	(5,301)	-88.4%
Volunteer Screening	1,361	333	1,028	2,071	919	1,152	125.4%	4,000	(1,930)	-48.2%
Strategic Awards	-	-	-	-	-	-	0.0%	-	-	0.0%
Total Strategic Service Awards	-	-	-	-	-	-	0.0%	-	-	0.0%
Total Family Ministry Dept	2,052	2,424	(372)	5,147	6,672	(1,525)	-22.9%	29,096	(23,949)	-82.3%
Total Family Ministry Division	52,441	51,062	1,379	134,316	150,974	(16,658)	-11.0%	639,224	(504,908)	-79.0%
College										
Postage	-	-	-	-	-	-	0.0%	396	(396)	-100.0%
Printing	-	-	-	712	750	(38)	-5.0%	3,000	(2,288)	-76.3%
Honorariums	4,577	5,600	(1,024)	11,991	13,700	(1,709)	-12.5%	56,496	(44,505)	-78.8%
Departmental Supplies	-	-	-	478	75	403	537.0%	500	(22)	-4.5%
Volunteer Development	817	350	467	1,531	925	606	65.5%	4,000	(2,469)	-61.7%
CG Volunteer Development	579	1,100	(521)	1,620	3,050	(1,430)	-46.9%	11,500	(9,880)	-85.9%
Leadership Development	-	-	-	11	-	11	0.0%	-	11	0.0%
Curriculum/Resources	57	-	57	99	175	(76)	-43.4%	500	(401)	-80.2%
Cellphone	300	440	(140)	615	1,210	(595)	-49.1%	5,280	(4,665)	-88.3%
Mileage	185	292	(107)	465	803	(338)	-42.1%	3,504	(3,039)	-86.7%
Staff Development	223	-	223	310	750	(440)	-58.6%	2,400	(2,090)	-87.1%
Parking & Shuttles	20	162	(142)	55	408	(353)	-86.6%	1,500	(1,445)	-96.4%
Facility Rental	4,800	4,800	-	14,400	10,500	3,900	37.1%	30,032	(15,632)	-52.1%
Website Development	-	-	-	-	375	(375)	-100.0%	3,000	(3,000)	-100.0%
The Living Room	198	-	198	1,058	1,125	(67)	-5.9%	3,000	(1,942)	-64.7%
Summer Gathering	30	-	30	30	-	30	0.0%	500	(470)	-94.0%
Signs	-	-	-	-	-	-	0.0%	1,500	(1,500)	-100.0%
Group Link	-	-	-	1,209	1,250	(41)	-3.3%	4,000	(2,791)	-69.8%
HS Transition	-	-	-	498	-	498	0.0%	4,500	(4,002)	-88.9%
Total College	11,786	12,744	(958)	35,082	35,096	(14)	0.0%	135,608	(100,526)	-74.1%
Singles										
SLN	-	-	-	-	-	-	0.0%	-	-	0.0%
Total SLN	-	-	-	-	-	-	0.0%	-	-	0.0%
Fusion	-	-	-	-	-	-	0.0%	-	-	0.0%

	Current Month Actual	Current Month Budget	Month Variance	Year To Date Actual	Year To Date Budget	Year To Date Variance	% Diff	Annual Budget	Diff To Date	% Diff
Fusion-Printing	-	-	-	443	-	443	0.0%	12,000	(11,557)	-96.3%
Fusion-Honorarium	-	2,500	(2,500)	440	2,500	(2,060)	-82.4%	7,500	(7,060)	-94.1%
Fusion-Volunteer Development	1,165	1,600	(435)	1,718	2,650	(932)	-35.2%	10,200	(8,482)	-83.2%
Fusion-Facility Rental	-	417	(417)	625	1,147	(522)	-45.5%	5,004	(4,379)	-87.5%
Fusion-Leadership Retreat	-	-	-	745	-	745	0.0%	7,500	(6,755)	-90.1%
Fusion-Gathering Activities	2,195	1,875	320	3,048	5,156	(2,108)	-40.9%	22,500	(19,452)	-86.5%
Fusion-Programming	3,238	-	3,238	3,559	-	3,559	0.0%	6,000	(2,441)	-40.7%
Total Fusion	6,598	6,392	206	10,577	11,453	(876)	-7.6%	70,704	(60,127)	-85.0%
Christmas Event										
Christmas Event-Design/Print	-	-	-	-	-	-	0.0%	1,500	(1,500)	-100.0%
Christmas Event-Honorariums	-	-	-	-	-	-	0.0%	19,400	(19,400)	-100.0%
Christmas Event-Decor/Set	-	-	-	-	-	-	0.0%	2,000	(2,000)	-100.0%
Christmas Event-Income	-	-	-	-	-	-	0.0%	(18,000)	18,000	-100.0%
Christmas Event-Other Expense	-	-	-	-	-	-	0.0%	1,500	(1,500)	-100.0%
Christmas Event-Food	-	-	-	-	-	-	0.0%	1,600	(1,600)	-100.0%
Total Christmas Event	-	-	-	-	-	-	0.0%	8,000	(8,000)	-100.0%
InFusion										
inFusion: Printing	-	-	-	-	450	(450)	-100.0%	1,800	(1,800)	-100.0%
inFusion: Honorarium	-	-	-	2,839	6,525	(3,686)	-56.5%	26,100	(23,261)	-89.1%
inFusion: Supplies	-	-	-	227	750	(523)	-69.8%	3,000	(2,773)	-92.4%
inFusion: Other Event Expense	-	-	-	8,771	375	8,396	2238.9%	1,500	7,271	484.7%
inFusion: Food	-	-	-	3,482	3,150	332	10.5%	12,600	(9,118)	-72.4%
Total InFusion	-	-	-	15,318	11,250	4,068	36.2%	45,000	(29,682)	-66.0%
Postage	-	83	(83)	-	228	(228)	-100.0%	996	(996)	-100.0%
Printing	-	167	(167)	778	459	318	69.3%	2,004	(1,226)	-61.2%
Honorariums	-	-	-	84	-	84	0.0%	-	84	0.0%
Departmental Supplies	-	250	(250)	395	688	(292)	-42.5%	3,000	(2,605)	-86.8%
Volunteer Development	-	83	(83)	172	228	(57)	-24.8%	996	(824)	-82.8%
Telephone/Cell	235	250	(15)	235	688	(453)	-65.9%	3,000	(2,765)	-92.2%
Mileage	110	125	(15)	284	344	(60)	-17.5%	1,500	(1,216)	-81.1%
Contract Labor	618	-	618	906	-	906	0.0%	-	906	0.0%
Staff Development	42	767	(725)	338	2,109	(1,771)	-84.0%	9,204	(8,866)	-96.3%
Activities	-	125	(125)	-	344	(344)	-100.0%	1,500	(1,500)	-100.0%
Total Singles	7,602	8,242	(640)	29,086	27,791	1,296	4.7%	145,904	(116,818)	-80.1%
7:22										
Contributions	(7,888)	(10,889)	3,001	(17,747)	(32,667)	14,920	-45.7%	(130,668)	112,921	-86.4%
Postage	-	21	(21)	-	58	(58)	-100.0%	252	(252)	-100.0%
Printing	-	-	-	-	1,001	(1,001)	-100.0%	3,996	(3,996)	-100.0%
Honorariums	13,960	7,550	6,410	29,667	20,763	8,904	42.9%	90,600	(60,933)	-67.3%
Departmental Supplies	101	333	(232)	207	916	(709)	-77.4%	3,996	(3,789)	-94.8%
Volunteer Development	5,019	791	4,228	6,570	2,175	4,394	202.0%	23,496	(16,926)	-72.0%
Leadership Development	852	1,167	(315)	1,778	3,209	(1,431)	-44.6%	14,004	(12,226)	-87.3%
Telephone/Cell	200	417	(217)	800	1,147	(347)	-30.2%	5,004	(4,204)	-84.0%
Mileage	69	100	(31)	69	275	(206)	-75.0%	1,200	(1,131)	-94.3%
Departmental Equipment	2,251	-	2,251	2,251	19,503	(17,252)	-88.5%	26,004	(23,753)	-91.3%
Resources	14	-	14	14	-	14	0.0%	-	14	0.0%
Parking	10,180	8,000	2,180	26,180	22,000	4,180	19.0%	72,000	(45,820)	-63.6%
Website Development	108	167	(59)	108	459	(352)	-76.6%	2,004	(1,896)	-94.6%
Creative Block	4,825	3,158	1,667	9,236	8,685	551	6.3%	37,896	(28,660)	-75.6%

	Current Month Actual	Current Month Budget	Month Variance	Year To Date Actual	Year To Date Budget	Year To Date Variance	% Diff	Annual Budget	Diff To Date	% Diff
Volunteer Retreat	-	-	-	-	-	-	0.0%	6,000	(6,000)	-100.0%
Traffic Control	5,978	6,400	(422)	13,002	17,600	(4,598)	-26.1%	57,600	(44,598)	-77.4%
Bank Charges	-	70	(70)	-	193	(193)	-100.0%	840	(840)	-100.0%
Production Shirts	-	-	-	-	-	-	0.0%	1,104	(1,104)	-100.0%
Travel & Entertainment	-	500	(500)	-	1,375	(1,375)	-100.0%	6,000	(6,000)	-100.0%
Video Streaming	-	1,667	(1,667)	-	4,584	(4,584)	-100.0%	20,004	(20,004)	-100.0%
Band Food	5,900	3,200	2,700	6,804	8,800	(1,996)	-22.7%	28,800	(21,996)	-76.4%
Creative Honorarium	-	375	(375)	-	1,031	(1,031)	-100.0%	4,500	(4,500)	-100.0%
Total 7:22	41,568	23,027	18,541	78,936	81,106	(2,169)	-2.7%	274,632	(195,696)	-71.3%
Ladies Link										
Postage	-	4	(4)	-	11	(11)	-100.0%	48	(48)	-100.0%
Department Supplies	-	33	(33)	4	91	(87)	-95.3%	396	(392)	-98.9%
Volunteer Development	126	205	(79)	255	564	(309)	-54.8%	2,460	(2,205)	-89.6%
Leadership Development	52	340	(288)	58	375	(317)	-84.4%	2,460	(2,402)	-97.6%
Curriculum	134	15	119	134	36	98	269.9%	100	34	34.1%
Telephone/Cell	-	105	(105)	105	289	(184)	-63.6%	1,260	(1,155)	-91.7%
Mileage	175	92	83	300	253	47	18.5%	1,104	(804)	-72.9%
Staff Development	30	-	30	30	-	30	0.0%	1,000	(970)	-97.0%
Total Ladies Link	517	794	(277)	886	1,619	(732)	-45.3%	8,828	(7,942)	-90.0%
Married Community Groups										
Postage	-	20	(20)	(4)	55	(59)	-107.3%	240	(244)	-101.7%
Departmental Supplies	-	184	(184)	-	506	(506)	-100.0%	2,208	(2,208)	-100.0%
Volunteer Development	520	634	(114)	771	1,744	(972)	-55.8%	7,608	(6,837)	-89.9%
Leadership Development	71	1,000	(929)	134	1,831	(1,697)	-92.7%	9,696	(9,562)	-98.6%
Curriculum	(197)	22	(219)	6	61	(55)	-90.5%	264	(258)	-97.8%
Telephone/Cell	334	355	(21)	456	976	(521)	-53.3%	4,260	(3,804)	-89.3%
Mileage	98	83	15	138	228	(90)	-39.6%	996	(858)	-86.2%
Staff Development	67	367	(300)	114	1,009	(896)	-88.7%	4,404	(4,290)	-97.4%
Marketing-BC specific	-	167	(167)	-	459	(459)	-100.0%	2,004	(2,004)	-100.0%
Total Married Community Grps	892	2,832	(1,940)	1,615	6,869	(5,255)	-76.5%	31,680	(30,065)	-94.9%
Group Life Administration										
Printing	225	375	(150)	1,024	1,031	(7)	-0.7%	4,500	(3,476)	-77.2%
Department Supplies	55	50	5	126	138	(11)	-8.1%	600	(474)	-78.9%
Volunteer Development	-	50	(50)	400	138	263	190.9%	600	(200)	-33.3%
Leadership Development	219	2,250	(2,031)	326	6,188	(5,862)	-94.7%	27,000	(26,674)	-98.8%
Staff Development	104	100	4	218	275	(57)	-20.9%	1,200	(982)	-81.9%
Childcare Reimbursement	6,037	1,100	4,937	13,958	3,025	10,933	361.4%	13,200	758	5.7%
"Next" Environment	7,796	-	7,796	9,144	-	9,144	0.0%	-	9,144	0.0%
Intersect Project	37	1,250	(1,213)	360	3,438	(3,078)	-89.5%	15,000	(14,640)	-97.6%
Total Group Life Administration	14,474	5,175	9,299	25,556	14,231	11,325	79.6%	62,100	(36,544)	-58.8%
CG-College/Singles										
Postage	-	18	(18)	-	50	(50)	-100.0%	216	(216)	-100.0%
Departmental Supplies	64	200	(136)	64	550	(486)	-88.4%	2,400	(2,336)	-97.4%
Volunteer Development	820	1,248	(428)	1,408	3,432	(2,024)	-59.0%	14,976	(13,568)	-90.6%
Leadership Development	31	1,968	(1,937)	47	2,332	(2,285)	-98.0%	13,976	(13,929)	-99.7%
Curriculum	-	100	(100)	42	275	(233)	-84.6%	1,200	(1,158)	-96.5%

	Current Month Actual	Current Month Budget	Month Variance	Year To Date Actual	Year To Date Budget	Year To Date Variance	% Diff	Annual Budget	Diff To Date	% Diff
Telephone/Cell	306	420	(114)	657	1,155	(498)	-43.1%	5,040	(4,383)	-87.0%
Mileage	413	300	113	717	825	(108)	-13.1%	4,600	(3,883)	-84.4%
Staff Development	164	-	164	2,173	-	2,173	0.0%	6,960	(4,787)	-68.8%
Marketing-BC specific	-	125	(125)	-	344	(344)	-100.0%	1,500	(1,500)	-100.0%
Total CG-College/Singles	1,798	4,379	(2,581)	5,108	8,962	(3,854)	-43.0%	50,868	(45,760)	-90.0%
Singles Assimilation										
Postage	-	6	(6)	-	17	(17)	-100.0%	72	(72)	-100.0%
Printing	-	-	-	1,162	1,688	(526)	-31.1%	9,744	(8,582)	-88.1%
Departmental Supplies	2	10	(8)	2	28	(25)	-91.2%	120	(118)	-98.0%
Volunteer Development	-	60	(60)	-	165	(165)	-100.0%	720	(720)	-100.0%
Leadership Development	-	-	-	-	281	(281)	-100.0%	3,264	(3,264)	-100.0%
Curriculum	(32)	-	(32)	2,713	2,503	210	8.4%	5,724	(3,011)	-52.6%
Telephone/Cell	-	100	(100)	-	275	(275)	-100.0%	1,200	(1,200)	-100.0%
Mileage	-	60	(60)	-	165	(165)	-100.0%	720	(720)	-100.0%
Staff Development	106	20	86	106	55	51	92.8%	756	(650)	-86.0%
Group Link	3,509	9,560	(6,051)	13,808	20,405	(6,597)	-32.3%	49,176	(35,368)	-71.9%
Total Single Assimilation	3,586	9,816	(6,230)	17,791	25,580	(7,789)	-30.5%	71,496	(53,705)	-75.1%
Marrieds Assimilation										
Postage	-	6	(6)	-	17	(17)	-100.0%	72	(72)	-100.0%
Printing	-	-	-	1,078	1,763	(684)	-38.8%	10,080	(9,002)	-89.3%
Departmental Supplies	-	10	(10)	40	28	13	45.5%	120	(80)	-66.7%
Volunteer Development	-	60	(60)	17	165	(148)	-89.9%	720	(703)	-97.7%
Leadership Development	-	-	-	20	263	(243)	-92.6%	2,568	(2,548)	-99.2%
Curriculum	323	-	323	871	2,494	(1,622)	-65.1%	5,700	(4,829)	-84.7%
Telephone/Cell	85	100	(15)	185	275	(90)	-32.6%	1,200	(1,015)	-84.6%
Mileage	65	85	(21)	83	234	(151)	-64.4%	1,020	(937)	-91.8%
Staff Development	360	20	340	494	55	439	797.5%	756	(262)	-34.7%
Group Link	2,514	10,625	(8,111)	13,633	22,066	(8,433)	-38.2%	52,848	(39,215)	-74.2%
Total Marrieds Assimilation	3,347	10,906	(7,559)	16,421	27,358	(10,936)	-40.0%	75,084	(58,663)	-78.1%
Starting Point										
Postage	-	29	(29)	-	80	(80)	-100.0%	348	(348)	-100.0%
Supplies	165	25	140	398	69	329	479.0%	300	98	32.7%
Volunteer Development	149	337	(188)	339	927	(588)	-63.4%	4,044	(3,705)	-91.6%
Leadership Development	4,351	1,641	2,710	4,670	1,888	2,782	147.4%	4,692	(22)	-0.5%
SP Curriculum	12	190	(178)	99	523	(424)	-81.1%	2,280	(2,181)	-95.7%
Telephone	-	200	(200)	-	550	(550)	-100.0%	2,400	(2,400)	-100.0%
Mileage	55	33	22	111	91	20	21.9%	396	(285)	-72.1%
Staff Development	57	-	57	57	-	57	0.0%	1,500	(1,443)	-96.2%
SP Orientations	-	100	(100)	26	275	(249)	-90.5%	1,200	(1,174)	-97.8%
SP Rooms & Coffee	110	425	(315)	191	1,169	(978)	-83.6%	5,100	(4,909)	-96.3%
SP Marketing/Promo	-	-	-	54	1,000	(947)	-94.7%	4,000	(3,947)	-98.7%
Engage 08-SP Leader Event	3,120	3,120	-	3,120	3,120	-	0.0%	3,120	-	0.0%
Total Starting Point	8,019	6,100	1,919	9,064	9,690	(626)	-6.5%	29,380	(20,316)	-69.2%
LTR Admin										
Total LTR Admin	-	-	-	-	-	-	0.0%	-	-	0.0%



Browns Bridge Community Church
Departmental Profit & Loss Statement
Run On 4/5/2008
3 Months Ended 3/31/2008

	Current Month Actual	Current Month Budget	Month Variance	Year To Date Actual	Year To Date Budget	Year To Date Variance	% Diff	Annual Budget	Diff To Date	% Diff
Receipts										
Contributions	541,255	477,621	63,634	1,235,652	1,278,822	(43,170)	-3.4%	5,800,000	(4,564,348)	-78.7%
Total Receipts	541,255	477,621	63,634	1,235,652	1,278,822	(43,170)	-3.4%	5,800,000	(4,564,348)	-78.7%
Department Expenses										
Preschool	8,408	7,157	1,251	15,837	20,433	(4,596)	-22.5%	97,000	(81,163)	-83.7%
Weekday Preschool	1,556	3,634	(2,078)	3,599	10,782	(7,183)	-66.6%	44,240	(40,641)	-91.9%
Upstreet Kids	13,293	8,313	4,980	23,656	27,840	(4,184)	-15.0%	134,004	(110,348)	-82.3%
Kidstuf	13,234	11,239	1,995	30,940	30,907	33	0.1%	132,530	(101,590)	-76.7%
Middle School	7,634	10,035	(2,401)	29,032	33,318	(4,286)	-12.9%	144,996	(115,964)	-80.0%
High School	11,584	9,417	2,167	33,744	31,640	2,104	6.6%	159,996	(126,252)	-78.9%
Family Ministry Dept	5,470	2,476	2,994	6,303	10,284	(3,981)	-38.7%	41,012	(34,709)	-84.6%
Married Life	95	7,646	(7,551)	8,087	10,134	(2,047)	-20.2%	40,984	(32,897)	-80.3%
Singles	169	1,544	(1,375)	390	3,546	(3,156)	-89.0%	15,028	(14,638)	-97.4%
CG-Ladies Link	290	678	(388)	360	1,865	(1,505)	-80.7%	9,157	(8,797)	-96.1%
CG-Marrieds	869	3,499	(2,630)	1,369	9,622	(8,253)	-85.8%	41,988	(40,619)	-96.7%
CG-College/Singles	142	707	(565)	152	2,406	(2,253)	-93.7%	9,144	(8,992)	-98.3%
CG-Assimilation	4,956	6,612	(1,656)	16,767	21,320	(4,552)	-21.4%	60,254	(43,487)	(1)
GL Training & Resources	-	-	-	-	-	-	0.0%	-	-	-
Starting Point	2,198	764	1,434	2,641	3,536	(895)	-25.3%	12,367	(9,726)	-78.6%
Group Life Administration	14,188	5,218	8,970	37,205	15,725	21,481	136.6%	65,616	(28,411)	-43.3%
Care Ministry	429	3,776	(3,347)	3,073	9,691	(6,618)	-68.3%	46,212	(43,139)	-93.4%
Membership Dev. Admin/Assim	29	448	(419)	81	882	(801)	-90.9%	3,536	(3,455)	(1)
Worship	12,122	15,625	(3,503)	40,214	42,969	(2,755)	-6.4%	187,500	(147,286)	-78.6%
Music	10,203	11,709	(1,506)	26,699	32,200	(5,501)	-17.1%	140,508	(113,809)	-81.0%
Worship Production	16,729	10,466	6,263	38,203	38,407	(204)	-0.5%	125,092	(86,889)	-69.5%
Host	6,744	4,787	1,957	18,864	13,898	4,967	35.7%	69,936	(51,072)	-73.0%
Missions	34,400	34,400	-	103,200	103,200	-	0.0%	412,800	(309,600)	-75.0%
Campus Director Dept	3,024	4,375	(1,351)	4,041	12,031	(7,990)	-66.4%	56,000	(51,959)	(1)
Administration	103,819	97,955	5,864	299,247	291,680	7,568	2.6%	1,175,460	(876,213)	-74.5%
Facilities	51,678	59,384	(7,706)	156,062	163,306	(7,244)	-4.4%	712,608	(556,546)	-78.1%
BBCC-Salary/Benefits	168,762	182,066	(13,304)	490,051	546,199	(56,148)	-10.3%	2,358,888	(1,868,837)	-79.2%
Total Operating Expenses	492,026	503,930	(11,904)	1,389,816	1,487,816	(98,000)	-6.6%	6,296,856	(4,907,040)	-77.9%
Capital Expenditures	47,478	34,169	13,310	51,953	84,375	(32,422)	-38.4%	150,000	(98,047)	-65.4%
Operating Profit	1,750	(60,478)	62,228	(206,117)	(293,370)	87,253	-29.7%	(646,856)	440,739	-68.1%
Other Income & Expense										
Total Other Income & Expense	-	-	-	-	-	-	0.0%	-	-	0.0%
Net Profit / Loss	1,750	(60,478)	62,228	(206,117)	(293,370)	87,253	-29.7%	(646,856)	440,739	-68.1%

Browns Bridge Community Church
Profit & Loss Statement
 Run On 4/5/2008
 3 Months Ended 3/31/2008

	Current Month Actual	Current Month Budget	Month Variance	Year To Date Actual	Year To Date Budget	Year To Date Variance	% Diff	Annual Budget	Diff To Date	% Diff
Income										
Contributions	541,255	477,621	63,634	1,235,652	1,278,822	(43,170)	-3.4%	5,800,000	4,564,348	-78.7%
Income	541,255	477,621	63,634	1,235,652	1,278,822	(43,170)	-3.4%	5,800,000	4,564,348	-78.7%
Expenses										
Preschool										
Postage	82	208	(127)	82	572	(491)	-85.8%	2,496	(2,415)	-96.7%
Printing	371	479	(108)	371	1,317	(946)	-71.8%	5,748	(5,377)	-93.5%
Honorariums	-	356	(356)	-	979	(979)	-100.0%	4,272	(4,272)	-100.0%
Departmental Supplies	2,686	2,365	321	6,249	6,504	(254)	-3.9%	28,380	(22,131)	-78.0%
Volunteer Development	2,083	1,200	883	4,492	2,851	1,641	57.5%	15,768	(11,276)	-71.5%
Leadership Development	95	500	(405)	95	1,513	(1,418)	-93.7%	8,496	(8,401)	-98.9%
Curriculum	436	1,066	(630)	910	2,932	(2,021)	-69.0%	12,792	(11,882)	-92.9%
Staff Development	40	750	(710)	293	1,625	(1,332)	-82.0%	7,752	(7,459)	-96.2%
Departmental Equipment	-	-	-	80	-	80	0.0%	-	80	0.0%
Seasonal Decorations	-	42	(42)	-	116	(116)	-100.0%	504	(504)	-100.0%
Baby Dedication	2,567	-	2,567	3,200	1,500	1,700	113.3%	6,000	(2,800)	-46.7%
Tape Resources	50	128	(79)	66	352	(286)	-81.3%	1,536	(1,470)	-95.7%
Contractual Childcare	-	63	(63)	-	173	(173)	-100.0%	756	(756)	-100.0%
Leadership Retreat	-	-	-	-	-	-	0.0%	2,500	(2,500)	-100.0%
Total Preschool	8,408	7,157	1,251	15,837	20,433	(4,596)	-22.5%	97,000	(81,163)	-83.7%
Weekday Preschool										
Preschool Weekday Teacher Sala	3,823	6,974	(3,151)	10,038	20,922	(10,884)	-52.0%	90,662	(80,624)	-88.9%
Employer Expenses	278	633	(355)	735	1,899	(1,164)	-61.3%	8,228	(7,493)	-91.1%
Workers Compensation	-	46	(46)	-	138	(138)	-100.0%	598	(598)	-100.0%
Departmental Supplies	74	250	(176)	194	688	(493)	-71.7%	3,000	(2,806)	-93.5%
Preschool Weekday Leadership D	57	100	(43)	57	275	(218)	-79.3%	2,184	(2,127)	-97.4%
Income	(2,675)	(4,500)	1,825	(7,426)	(13,500)	6,074	-45.0%	(63,000)	55,574	-88.2%
Preschool Weekday Hiring Expen	-	131	(131)	-	360	(360)	-100.0%	1,572	(1,572)	-100.0%
Preschool Weekday Special Even	-	-	-	-	-	-	0.0%	996	(996)	-100.0%
Total Weekday Preschool	1,556	3,634	(2,078)	3,599	10,782	(7,183)	-66.6%	44,240	(40,641)	-91.9%
Upstreet Kids										
Postage	565	413	152	565	1,004	(439)	-43.7%	6,156	(5,591)	-90.8%
Printing	1,348	729	619	2,132	1,908	224	11.7%	8,748	(6,617)	-75.6%
Honorariums	1,003	1,132	(130)	3,673	3,113	560	18.0%	13,584	(9,912)	-73.0%
Departmental Supplies	6,980	3,125	3,855	9,167	8,744	424	4.8%	39,900	(30,733)	-77.0%
Volunteer Development	2,009	800	1,209	3,249	2,302	947	41.1%	13,248	(9,999)	-75.5%
Leadership Development	-	-	-	-	2,250	(2,250)	-100.0%	6,504	(6,504)	-100.0%
Curriculum	-	83	(83)	-	228	(228)	-100.0%	996	(996)	-100.0%
Contract Labor	-	-	-	30	-	30	0.0%	-	30	0.0%
Staff Development	183	333	(150)	536	916	(379)	-41.4%	3,996	(3,460)	-86.6%
Departmental Equipment	391	-	391	391	-	391	0.0%	-	391	0.0%

	Current Month Actual	Current Month Budget	Month Variance	Year To Date Actual	Year To Date Budget	Year To Date Variance	% Diff	Annual Budget	Diff To Date	% Diff
Tape Resources	-	225	(225)	-	619	(619)	-100.0%	2,700	(2,700)	-100.0%
Kid Venture	99	-	99	2,678	2,250	428	19.0%	6,000	(3,322)	-55.4%
Seasonal Decorations	-	-	-	43	456	(413)	-90.6%	2,496	(2,453)	-98.3%
Family B'day Celebration	322	-	322	322	-	322	0.0%	2,496	(2,174)	-87.1%
Summer Craze	-	-	-	-	-	-	0.0%	7,500	(7,500)	-100.0%
Leadership Retreat	-	-	-	-	-	-	0.0%	2,004	(2,004)	-100.0%
Copier Rental	-	640	(640)	-	1,760	(1,760)	-100.0%	7,680	(7,680)	-100.0%
Large Group Production	394	833	(439)	871	2,291	(1,420)	-62.0%	9,996	(9,125)	-91.3%
Total Upstreet Kids	13,293	8,313	4,980	23,656	27,840	(4,184)	-15.0%	134,004	(110,348)	-82.3%
Kidstuf										
Postage	-	54	(54)	-	149	(149)	-100.0%	650	(650)	-100.0%
Printing	-	42	(42)	92	116	(24)	-20.8%	504	(413)	-81.8%
Honorariums	7,012	6,999	13	18,297	19,247	(950)	-4.9%	83,988	(65,691)	-78.2%
Supplies	1,970	354	1,616	2,137	974	1,164	119.6%	4,248	(2,111)	-49.7%
Volunteer Development	1,586	1,458	128	2,874	4,010	(1,135)	-28.3%	17,496	(14,622)	-83.6%
Staff Development	194	208	(14)	219	572	(353)	-61.8%	2,496	(2,277)	-91.2%
Props and Decor	1,665	1,170	495	4,164	3,218	946	29.4%	11,700	(7,536)	-64.4%
Design	-	83	(83)	-	228	(228)	-100.0%	996	(996)	-100.0%
Technical	807	871	(64)	3,157	2,395	762	31.8%	10,452	(7,295)	-69.8%
Total Kidstuf	13,234	11,239	1,995	30,940	30,907	33	0.1%	132,530	(101,590)	-76.7%
Middle School										
Postage	15	63	(48)	15	173	(158)	-91.2%	756	(741)	-98.0%
Printing	-	375	(375)	-	1,031	(1,031)	-100.0%	4,500	(4,500)	-100.0%
Honorariums	4,597	4,488	109	15,443	12,342	3,101	25.1%	53,856	(38,413)	-71.3%
Departmental Supplies	3,373	1,000	2,373	6,013	2,750	3,263	118.7%	12,000	(5,987)	-49.9%
Attic Stage Design	-	833	(833)	-	2,291	(2,291)	-100.0%	9,996	(9,996)	-100.0%
Volunteer Development	1,067	1,452	(385)	1,495	3,486	(1,992)	-57.1%	15,888	(14,393)	-90.6%
Curriculum	72	63	9	72	173	(101)	-58.5%	756	(684)	-90.5%
Staff Development	916	528	388	1,178	1,452	(274)	-18.9%	6,336	(5,158)	-81.4%
WWW Income	(1,758)	-	(1,758)	(1,758)	-	(1,758)	0.0%	-	(1,758)	0.0%
WWW Expense	(1,467)	-	(1,467)	4,533	6,228	(1,695)	-27.2%	6,228	(1,695)	-27.2%
6th Grade Camp Expense	-	-	-	-	-	-	0.0%	2,940	(2,940)	-100.0%
Small Grp Ldr Conf.	-	-	-	-	-	-	0.0%	5,520	(5,520)	-100.0%
Zone Events	-	-	-	-	-	-	0.0%	3,000	(3,000)	-100.0%
Middle School Event Budget	561	-	561	561	-	561	0.0%	-	561	0.0%
Student Food	258	1,233	(975)	1,479	3,391	(1,912)	-56.4%	14,796	(13,317)	-90.0%
VR78 Expense	-	-	-	-	-	-	0.0%	8,424	(8,424)	-100.0%
Total Middle School	7,634	10,035	(2,401)	29,032	33,318	(4,286)	-12.9%	144,996	(115,964)	-80.0%
High School										
Student Impact Supplies	-	167	(167)	-	459	(459)	-100.0%	2,004	(2,004)	-100.0%
Postage	-	83	(83)	-	228	(228)	-100.0%	996	(996)	-100.0%
Printing	-	333	(333)	-	916	(916)	-100.0%	3,996	(3,996)	-100.0%
Honorariums	5,549	3,750	1,799	18,686	10,313	8,374	81.2%	45,000	(26,314)	-58.5%
Departmental Supplies	4,448	918	3,530	8,368	2,525	5,843	231.5%	11,016	(2,648)	-24.0%
Loft Supplies	-	-	-	186	-	186	0.0%	-	186	0.0%
Attic Stage	1,080	833	247	1,883	2,291	(408)	-17.8%	9,996	(8,113)	-81.2%
Volunteer Development	436	750	(314)	830	2,063	(1,232)	-59.7%	9,000	(8,170)	-90.8%

	Current Month Actual	Current Month Budget	Month Variance	Year To Date Actual	Year To Date Budget	Year To Date Variance	% Diff	Annual Budget	Diff To Date	% Diff
Leadership Development	601	-	601	764	-	764	0.0%	-	764	0.0%
Curriculum	43	-	43	118	-	118	0.0%	-	118	0.0%
Staff Development	-	250	(250)	77	688	(610)	-88.7%	3,000	(2,923)	-97.4%
Sr. High Camp Expense	-	-	-	-	3,750	(3,750)	-100.0%	36,000	(36,000)	-100.0%
WWW Expense	(2,589)	-	(2,589)	(2,511)	871	(3,382)	-388.3%	996	(3,507)	-352.1%
Vertical Reality Expense	-	-	-	-	1,122	(1,122)	-100.0%	9,996	(9,996)	-100.0%
Inside/Out Food/Drink	1,055	1,333	(278)	2,544	3,666	(1,122)	-30.6%	15,996	(13,452)	-84.1%
Attic Tech Supplies	962	1,000	(38)	2,798	2,750	48	1.7%	12,000	(9,202)	-76.7%
Total High School	11,584	9,417	2,167	33,744	31,640	2,104	6.6%	159,996	(126,252)	-78.9%
Family Ministry Department										
Printing	-	-	-	-	375	(375)	-100.0%	2,000	(2,000)	-100.0%
Departmental Supplies	-	167	(167)	-	459	(459)	-100.0%	2,004	(2,004)	-100.0%
Telephone/Cell	716	500	216	1,108	1,375	(267)	-19.4%	6,000	(4,892)	-81.5%
Mileage	578	100	478	945	275	670	243.6%	1,200	(255)	-21.3%
Vol. Recognition	45	1,292	(1,247)	45	3,553	(3,508)	-98.7%	15,504	(15,459)	-99.7%
B'day Celebrations	3,893	-	3,893	3,893	3,100	793	25.6%	9,300	(5,407)	-58.1%
Volunteer Screening	237	417	(180)	312	1,147	(835)	-72.8%	5,004	(4,692)	-93.8%
Strategic Service Awards	-	-	-	-	-	-	0.0%	-	-	0.0%
Total Strategic Service Awards	-	-	-	-	-	-	0.0%	-	-	0.0%
Total Family Ministry Dept	5,470	2,476	2,994	6,303	10,284	(3,981)	-38.7%	41,012	(34,709)	-84.6%
Total Family Ministry Division	61,179	52,271	8,908	143,110	165,203	(22,093)	-13.4%	753,778	(610,668)	-81.0%
College										
Total College	-	-	-	-	-	-	0.0%	-	-	0.0%
Singles										
SLN	-	-	-	-	-	-	0.0%	-	-	0.0%
Total SLN	-	-	-	-	-	-	0.0%	-	-	0.0%
Fusion										
Fusion-Printing	-	208	(208)	35	572	(537)	-93.9%	2,496	(2,461)	-98.6%
Fusion-Honorarium	-	400	(400)	-	400	(400)	-100.0%	1,300	(1,300)	-100.0%
Fusion-Volunteer Development	-	208	(208)	-	572	(572)	-100.0%	2,496	(2,496)	-100.0%
Fusion-Facility Rental	-	100	(100)	-	275	(275)	-100.0%	1,200	(1,200)	-100.0%
Fusion-Leadership Retreat	-	250	(250)	-	688	(688)	-100.0%	3,000	(3,000)	-100.0%
Fusion-Gathering Activities	-	50	(50)	185	138	48	34.8%	600	(415)	-69.1%
Fusion-Programming	169	-	169	169	-	169	0.0%	-	169	0.0%
Total Fusion	169	1,216	(1,047)	390	2,644	(2,254)	-85.3%	11,092	(10,702)	-96.5%
Christmas Event										
Total Christmas Event	-	-	-	-	-	-	0.0%	-	-	0.0%
Postage	-	17	(17)	-	47	(47)	-100.0%	204	(204)	-100.0%
Printing	-	42	(42)	-	116	(116)	-100.0%	504	(504)	-100.0%
Departmental Supplies	-	42	(42)	-	116	(116)	-100.0%	504	(504)	-100.0%
Telephone/Cell	-	25	(25)	-	69	(69)	-100.0%	300	(300)	-100.0%
Mileage	-	17	(17)	-	47	(47)	-100.0%	204	(204)	-100.0%
Staff Development	-	60	(60)	-	165	(165)	-100.0%	720	(720)	-100.0%
Activities	-	125	(125)	-	344	(344)	-100.0%	1,500	(1,500)	-100.0%
Total Singles	169	1,544	(1,375)	390	3,546	(3,156)	-89.0%	15,028	(14,638)	-97.4%

	Current Month Actual	Current Month Budget	Month Variance	Year To Date Actual	Year To Date Budget	Year To Date Variance	% Diff	Annual Budget	Diff To Date	% Diff
Ladies Link										
Postage	-	2	(2)	-	6	(6)	-100.0%	45	(45)	-100.0%
Printing	-	38	(38)	-	105	(105)	-100.0%	456	(456)	-100.0%
Department Supplies	-	23	(23)	-	63	(63)	-100.0%	276	(276)	-100.0%
Volunteer Development	134	146	(12)	202	402	(199)	-49.6%	1,752	(1,550)	-88.5%
Leadership Development	-	256	(256)	-	704	(704)	-100.0%	3,072	(3,072)	-100.0%
Curriculum	-	38	(38)	-	105	(105)	-100.0%	456	(456)	-100.0%
Promotion	-	21	(21)	-	58	(58)	-100.0%	252	(252)	-100.0%
Telephone/Cell	105	65	40	105	179	(74)	-41.3%	780	(675)	-86.5%
Mileage	-	89	(89)	1	245	(243)	-99.4%	1,068	(1,067)	-99.9%
Staff Development	51	-	51	51	-	51	0.0%	1,000	(949)	-94.9%
Total Ladies Link	290	678	(388)	360	1,865	(1,505)	-80.7%	9,157	(8,797)	-96.1%
Married Community Groups										
Postage	-	15	(15)	-	41	(41)	-100.0%	180	(180)	-100.0%
Departmental Supplies	-	38	(38)	-	105	(105)	-100.0%	456	(456)	-100.0%
Volunteer Development	454	679	(225)	625	1,867	(1,242)	-66.5%	8,148	(7,523)	-92.3%
Leadership Development	-	2,177	(2,177)	-	5,987	(5,987)	-100.0%	26,124	(26,124)	-100.0%
Curriculum	-	8	(8)	-	22	(22)	-100.0%	96	(96)	-100.0%
Promotion	-	63	(63)	-	173	(173)	-100.0%	756	(756)	-100.0%
Telephone/Cell	63	160	(97)	190	440	(250)	-56.9%	1,920	(1,730)	-90.1%
Mileage	237	276	(39)	397	759	(362)	-47.7%	3,312	(2,915)	-88.0%
Staff Development	115	83	32	158	228	(71)	-31.0%	996	(838)	-84.2%
Total Married Community Grps	869	3,499	(2,630)	1,369	9,622	(8,253)	-85.8%	41,988	(40,619)	-96.7%
Group Life Administration										
Postage	-	34	(34)	-	94	(94)	-100.0%	408	(408)	-100.0%
Printing	-	338	(338)	-	930	(930)	-100.0%	4,056	(4,056)	-100.0%
Honorariums	-	125	(125)	-	344	(344)	-100.0%	1,500	(1,500)	-100.0%
Department Supplies	90	54	36	165	149	16	10.8%	648	(483)	-74.6%
Volunteer Development	-	20	(20)	-	55	(55)	-100.0%	240	(240)	-100.0%
Leadership Development	250	152	98	379	1,418	(1,039)	-73.3%	3,824	(3,445)	-90.1%
Intersect Project	-	537	(537)	-	1,477	(1,477)	-100.0%	6,444	(6,444)	-100.0%
Promotion	-	-	-	-	375	(375)	-100.0%	1,000	(1,000)	-100.0%
Telephone/Cell	210	105	105	420	289	131	45.5%	1,260	(840)	-66.7%
Mileage	260	146	114	395	402	(6)	-1.6%	1,752	(1,357)	-77.4%
Staff Development	74	633	(559)	919	1,741	(822)	-47.2%	7,596	(6,677)	-87.9%
Be Rich-GN Shelter & Other	(5,413)	-	(5,413)	-	-	-	0.0%	-	-	0.0%
"Next" Environment	8,091	488	7,603	9,479	1,342	8,137	606.3%	5,856	3,623	61.9%
Childcare Reimbursement	10,626	2,586	8,040	25,449	7,112	18,337	257.9%	31,032	(5,583)	-18.0%
Total Group Life Administration	14,188	5,218	8,970	37,205	15,725	21,481	136.6%	65,616	(28,411)	-43.3%
CG-College/Singles										
Postage	-	6	(6)	-	17	(17)	-100.0%	72	(72)	-100.0%
Departmental Supplies	-	17	(17)	-	122	(122)	-100.0%	304	(304)	-100.0%
Volunteer Development	99	162	(63)	109	446	(337)	-75.5%	1,944	(1,835)	-94.4%
Leadership Development	-	313	(313)	-	861	(861)	-100.0%	3,756	(3,756)	-100.0%
Curriculum	-	-	-	-	11	(11)	-100.0%	60	(60)	-100.0%
Promotion	-	-	-	-	375	(375)	-100.0%	500	(500)	-100.0%
Telephone/Cell	-	85	(85)	-	234	(234)	-100.0%	1,020	(1,020)	-100.0%

	Current Month Actual	Current Month Budget	Month Variance	Year To Date Actual	Year To Date Budget	Year To Date Variance	% Diff	Annual Budget	Diff To Date	% Diff
Mileage	-	61	(61)	-	168	(168)	-100.0%	732	(732)	-100.0%
Staff Development	43	63	(20)	43	173	(130)	-75.0%	756	(713)	-94.3%
Total CG-College/Singles	142	707	(565)	152	2,406	(2,253)	-93.7%	9,144	(8,992)	-98.3%
Singles Assimilation										
Postage	-	1	(1)	-	3	(3)	-100.0%	12	(12)	-100.0%
Printing	-	581	(581)	579	3,340	(2,760)	-82.6%	5,981	(5,402)	-90.3%
Honorariums	-	-	-	590	-	590	0.0%	-	590	0.0%
Departmental Supplies	-	7	(7)	-	19	(19)	-100.0%	84	(84)	-100.0%
Volunteer Development	-	20	(20)	-	50	(50)	-100.0%	275	(275)	-100.0%
Leadership Development	-	23	(23)	-	98	(98)	-100.0%	828	(828)	-100.0%
Curriculum	425	-	425	671	407	264	64.7%	1,086	(415)	-38.2%
Mileage	-	24	(24)	-	66	(66)	-100.0%	288	(288)	-100.0%
Staff Development	-	5	(5)	-	14	(14)	-100.0%	60	(60)	-100.0%
Group Link	8	787	(779)	1,512	2,164	(652)	-30.1%	9,444	(7,932)	-84.0%
Total Single Assimilation	433	1,448	(1,015)	3,352	6,161	(2,808)	-45.6%	18,058	(14,706)	-81.4%
Marrieds Assimilation										
Postage	-	10	(10)	-	18	(18)	-100.0%	57	(57)	-100.0%
Printing	2,727	594	2,133	3,614	1,889	1,725	91.3%	7,378	(3,764)	-51.0%
Honorariums	-	-	-	999	-	999	0.0%	-	999	0.0%
Departmental Supplies	101	7	94	101	19	82	426.8%	84	17	20.7%
Volunteer Development	-	58	(58)	20	160	(140)	-87.5%	696	(676)	-97.1%
Leadership Development	41	175	(134)	41	481	(440)	-91.5%	2,100	(2,059)	-98.1%
Curriculum	992	404	588	1,576	707	869	122.9%	1,616	(40)	-2.5%
Telephone/Cell	-	85	(85)	-	234	(234)	-100.0%	1,020	(1,020)	-100.0%
Mileage	-	121	(121)	36	333	(296)	-89.0%	1,452	(1,416)	-97.5%
Staff Development	47	10	37	115	28	87	317.0%	1,120	(1,005)	-89.8%
Group Link	615	3,700	(3,085)	6,914	11,292	(4,379)	-38.8%	26,673	(19,759)	-74.1%
Total Marrieds Assimilation	4,523	5,164	(641)	13,415	15,159	(1,744)	-11.5%	42,196	(28,781)	-68.2%
Starting Point										
Postage	-	3	(3)	-	8	(8)	-100.0%	110	(110)	-100.0%
Printing	-	42	(42)	-	959	(959)	-100.0%	2,004	(2,004)	-100.0%
Supplies	142	27	115	281	74	207	278.1%	324	(43)	-13.3%
Volunteer Development	10	72	(62)	10	308	(298)	-96.8%	1,324	(1,314)	-99.2%
Leadership Development	1,084	336	748	1,348	924	424	45.9%	4,032	(2,684)	-66.6%
SP Curriculum	14	30	(16)	14	214	(199)	-93.3%	765	(751)	-98.1%
Mileage	66	49	17	73	135	(62)	-45.6%	588	(515)	-87.5%
Staff Development	-	83	(83)	-	228	(228)	-100.0%	996	(996)	-100.0%
SP Orientations	50	15	35	50	41	9	21.2%	180	(130)	-72.2%
SP Rooms & Coffee	52	107	(55)	84	269	(185)	-68.8%	1,044	(960)	-92.0%
Engage 08-SP Leader Event	780	-	780	780	-	780	0.0%	-	780	0.0%
SP Marketing/Promotion	-	-	-	-	375	(375)	-100.0%	1,000	(1,000)	-100.0%
Total Starting Point	2,198	764	1,434	2,641	3,536	(895)	-25.3%	12,367	(9,726)	-78.6%
Married Life										
Christmas Traditions										
Total Christmas Traditions	-	-	-	-	-	-	0.0%	-	-	0.0%
MLL Event 3										



North Point Ministries Fund
Departmental Profit & Loss Statement
Run On 4/5/2008
3 Months Ended 3/31/2008

	Current Month Actual	Current Month Budget	Month Variance	Year To Date Actual	Year To Date Budget	Year To Date Variance	% Diff	Annual Budget	Diff To Date	% Diff
Receipts										
Buckhead Missions Contribution	64,685	64,685	-	194,055	194,055	-	0.0%	776,220	(582,165)	-75.0%
NPCC Missions Contribution	138,190	138,190	-	414,570	414,570	-	0.0%	1,658,280	(1,243,710)	-75.0%
BBC Missions Contribution	34,400	34,400	-	103,200	103,200	-	0.0%	412,800	(309,600)	-75.0%
NPCC NPM Allocation	358,375	358,375	-	1,075,125	1,075,125	-	0.0%	4,300,500	(3,225,375)	-75.0%
Buckhead NPM Allocation	167,750	167,750	-	503,250	503,250	-	0.0%	2,013,000	(1,509,750)	-75.0%
Browns Bridge NPM Allocation	89,213	89,213	-	267,639	267,639	-	0.0%	1,070,556	(802,917)	-75.0%
Total Receipts	852,613	852,613	-	2,557,839	2,557,839	-	0.0%	10,231,356	(7,673,517)	-75.0%
Department Expenses										
Preschool	-	333	(333)	-	916	(916)	-100.0%	6,000	(6,000)	-100.0%
Upstreet Kids	837	2,909	(2,072)	837	8,000	(7,163)	-89.5%	34,900	(34,063)	-97.6%
Kidstuff	9,312	7,638	1,674	22,006	24,125	(2,119)	-8.8%	117,744	(95,738)	-81.3%
Middle School	1,725	-	1,725	1,725	-	1,725	0.0%	-	1,725	0.0%
High School	368	2,750	(2,382)	2,768	6,817	(4,048)	-59.4%	29,004	(26,236)	-90.5%
Family Ministry Dept	6,484	3,591	2,893	18,214	11,378	6,836	60.1%	48,100	(29,886)	-62.1%
Married Life	1,221	2,094	(873)	2,439	5,984	(3,545)	-59.2%	27,732	(25,293)	-91.2%
College	-	-	-	-	-	-	0.0%	7,000	(7,000)	-100.0%
Singles	-	809	(809)	-	2,225	(2,225)	-100.0%	9,708	(9,708)	-100.0%
CG-Assimilation	26	1,350	(1,324)	141	4,613	(4,471)	-96.9%	11,400	(11,259)	(1)
GL Training & Resources	25,832	17,328	8,504	35,293	47,652	(12,359)	-25.9%	207,936	(172,643)	(1)
Starting Point	561	1,308	(747)	816	3,597	(2,781)	-77.3%	15,696	(14,880)	-94.8%
Group Life Administration	11,352	10,001	1,351	17,580	27,503	(9,923)	-36.1%	120,012	(102,432)	-85.4%
Care Ministry	2,549	9,084	(6,535)	5,124	13,606	(8,482)	-62.3%	40,218	(35,094)	-87.3%
Membership Dev. Admin/Assim	-	-	-	-	-	-	0.0%	-	-	-
Worship	633	3,039	(2,406)	633	8,357	(7,724)	-92.4%	36,464	(35,831)	-98.3%
Multi-Campus Broadcast	21,390	19,837	1,553	47,244	54,552	(7,308)	-13.4%	238,044	(190,800)	-80.2%
Music	34	544	(510)	92	1,496	(1,404)	-93.8%	6,528	(6,436)	-98.6%
Worship Production	829	542	287	5,691	1,491	4,200	281.8%	6,879	(1,188)	-17.3%
Host	4,414	883	3,531	5,616	2,428	3,188	131.3%	10,596	(4,980)	-47.0%
Globalx	53,489	153,780	(100,291)	292,550	449,130	(156,580)	-34.9%	1,815,344	(1,522,794)	-83.9%
Globalx-Salary/Benefits	81,864	82,146	(282)	246,869	246,439	430	0.2%	1,063,898	(817,029)	-76.8%
Campus Director Dept	8,267	37,608	(29,341)	35,285	83,997	(48,712)	-58.0%	260,696	(225,411)	(1)
Drive Conference	802	-	802	802	-	802	0.0%	(81,500)	82,302	(1)
Grow Up Conference	-	-	-	-	-	-	0.0%	-	-	-
Campus Expansion	(3,153)	77	(3,230)	(37,335)	(1,532)	(35,804)	2337.8%	(12,876)	(24,459)	190.0%
Administration	187,969	140,816	47,153	390,828	394,527	(3,699)	-0.9%	1,625,480	(1,234,652)	-76.0%
NPM-Salary/Benefits	390,383	420,556	(30,173)	1,153,321	1,261,667	(108,346)	-8.6%	5,435,674	(4,282,353)	-78.8%
Total Operating Expenses	807,187	919,023	(111,835)	2,248,538	2,658,964	(410,427)	-15.4%	11,080,677	(8,832,139)	-79.7%
Capital Expenditures	20,567	54,167	(33,599)	31,290	148,958	(117,669)	-79.0%	650,000	(618,710)	-95.2%
Operating Profit	24,858	(120,576)	145,435	278,012	(250,084)	528,095	-211.2%	(1,499,321)	1,777,333	-118.5%
Other Income & Expense	-	-	-	-	-	-	0.0%	-	-	0.0%
Net Profit / Loss	24,858	(120,576)	145,435	278,012	(250,084)	528,095	-211.2%	(1,499,321)	1,777,333	-118.5%

North Point Ministries Fund
Profit & Loss Statement
Run On 4/5/2008
3 Months Ended 3/31/2008

	Current Month Actual	Current Month Budget	Month Variance	Year To Date Actual	Year To Date Budget	Year To Date Variance	% Diff	Annual Budget	Diff To Date	% Diff
Receipts :										
Buckhead Missions Contribution	64,685	64,685	-	194,055	194,055	-	0.0%	776,220	(582,165)	75.0%
NPCC Missions Contribution	138,190	138,190	-	414,570	414,570	-	0.0%	1,658,280	(1,243,710)	75.0%
BBCC Missions Contribution	34,400	34,400	-	103,200	103,200	-	0.0%	412,800	(309,600)	75.0%
NPCC NPM Allocation	358,375	358,375	-	1,075,125	1,075,125	-	0.0%	4,300,500	(3,225,375)	75.0%
Buckhead NPM Allocation	167,750	167,750	-	503,250	503,250	-	0.0%	2,013,000	(1,509,750)	75.0%
Browns Bridge NPM Allocation	89,213	89,213	-	267,639	267,639	-	0.0%	1,070,556	(802,917)	75.0%
Total Receipts	852,613	852,613	-	2,557,839	2,557,839	-	0.0%	10,231,356	(7,673,517)	75.0%
Expenses :										
Preschool										
Honorariums	-	333	(333)	-	916	(916)	-100.0%	4,000	(4,000)	-100.0%
Music Production	-	-	-	-	-	-	0.0%	2,000	(2,000)	-100.0%
Total Preschool	-	333	(333)	-	916	(916)	-100.0%	6,000	(6,000)	-100.0%
Upstreet Kids										
Honorariums	-	992	(992)	-	2,728	(2,728)	-100.0%	11,900	(11,900)	-100.0%
Content Creation	-	1,250	(1,250)	-	3,438	(3,438)	-100.0%	15,000	(15,000)	-100.0%
Large Group Content	837	667	170	837	1,834	(997)	-54.4%	8,000	(7,163)	-89.5%
Total Upstreet Kids	837	2,909	(2,072)	837	8,000	(7,163)	-89.5%	34,900	(34,063)	-97.6%
Kidstuf										
Giveaways	5,641	2,972	2,669	10,139	8,173	1,966	24.1%	35,664	(25,525)	-71.6%
Printing	4	625	(621)	4	2,469	(2,464)	-99.8%	9,996	(9,992)	-100.0%
Honorariums	665	1,357	(692)	7,465	3,732	3,733	100.0%	16,284	(8,819)	-54.2%
Supplies	1,171	340	831	1,362	3,305	(1,943)	-58.8%	10,404	(9,042)	-86.9%
Volunteer Development	-	-	-	-	-	-	0.0%	17,268	(17,268)	-100.0%
Staff Development	1,463	1,152	311	2,228	3,168	(940)	-29.7%	13,824	(11,596)	-83.9%
Compassion	112	192	(80)	552	528	24	4.5%	2,304	(1,752)	-76.0%
Props & Decor	255	-	255	255	-	255	0.0%	-	255	0.0%
Design	-	1,000	(1,000)	-	2,750	(2,750)	-100.0%	12,000	(12,000)	-100.0%
Total Kidstuf	9,312	7,638	1,674	22,006	24,125	(2,119)	-8.8%	117,744	(95,738)	-81.3%
Junior High School										
New Middle School Branding	1,725	-	1,725	1,725	-	1,725	0.0%	-	1,725	0.0%
Total Junior High School	1,725	-	1,725	1,725	-	1,725	0.0%	-	1,725	0.0%
High School										
(MS) NPM Honorariums	75	250	(175)	1,975	688	1,288	187.3%	3,000	(1,025)	-34.2%
Content Development	-	667	(667)	-	1,834	(1,834)	-100.0%	8,004	(8,004)	-100.0%
NPM Honorariums	-	250	(250)	-	688	(688)	-100.0%	3,000	(3,000)	-100.0%
(MS) NPM Supplies	53	250	(197)	53	688	(634)	-92.2%	3,000	(2,947)	-98.2%
NPM Supplies	240	333	(93)	240	916	(676)	-73.8%	3,996	(3,756)	-94.0%
Small Grp Ldr Retreat	-	1,000	(1,000)	500	2,004	(1,504)	-75.0%	8,004	(7,504)	-93.8%
Total High School	368	2,750	(2,382)	2,768	6,817	(4,048)	-59.4%	29,004	(26,236)	-90.5%
Family Ministry										
Postage	-	-	-	103	-	103	0.0%	-	103	0.0%

	Current Month Actual	Current Month Budget	Month Variance	Year To Date Actual	Year To Date Budget	Year To Date Variance	% Diff	Annual Budget	Diff To Date	% Diff
Printing	-	-	-	-	1,500	(1,500)	-100.0%	5,000	(5,000)	-100.0%
Departmental Supplies	900	-	900	918	-	918	0.0%	-	918	0.0%
Telephone/Cell	1,075	833	242	1,618	2,291	(673)	-29.4%	10,000	(8,382)	-83.8%
Mileage	128	475	(347)	938	1,306	(369)	-28.2%	5,700	(4,762)	-83.6%
FM Contract Labor	-	333	(333)	-	919	(919)	-100.0%	4,000	(4,000)	-100.0%
Staff Development	11	450	(439)	644	1,238	(594)	-48.0%	5,400	(4,756)	-88.1%
Staff Retreat - January	4,370	833	3,537	13,994	2,294	11,700	510.1%	10,000	3,994	39.9%
Staff Retreat - Summer	-	667	(667)	-	1,831	(1,831)	-100.0%	8,000	(8,000)	-100.0%
FM Director Retreat	-	-	-	-	-	-	0.0%	-	-	0.0%
Total FM Director Retreat	-	-	-	-	-	-	0.0%	-	-	0.0%
S@NP	-	-	-	-	-	-	0.0%	-	-	0.0%
Total S@NP	-	-	-	-	-	-	0.0%	-	-	0.0%
Total Family Ministry Department	6,484	3,591	2,893	18,214	11,378	6,836	60.1%	48,100	(29,886)	-62.1%
Total Family Ministry Division	18,727	17,221	1,506	45,550	51,235	(5,684)	-11.1%	235,748	(190,198)	-80.7%
College	-	-	-	-	-	-	0.0%	7,000	(7,000)	-100.0%
Intern Program	-	-	-	-	-	-	0.0%	7,000	(7,000)	-100.0%
Total College	-	-	-	-	-	-	0.0%	7,000	(7,000)	-100.0%
Singles	-	167	(167)	-	459	(459)	-100.0%	2,004	(2,004)	-100.0%
Fusion-Leadership Development	-	225	(225)	-	619	(619)	-100.0%	2,700	(2,700)	-100.0%
Fusion-Curriculum Development	-	417	(417)	-	1,147	(1,147)	-100.0%	5,004	(5,004)	-100.0%
Fusion-Marketing	-	809	(809)	-	2,225	(2,225)	-100.0%	9,708	(9,708)	-100.0%
Total Singles	-	809	(809)	-	2,225	(2,225)	-100.0%	9,708	(9,708)	-100.0%
CG-Assimilation	-	1,250	(1,250)	35	2,188	(2,153)	-98.4%	4,500	(4,465)	-99.2%
Printing	26	-	26	26	-	26	0.0%	1,000	(974)	-97.4%
Staff Development	-	100	(100)	80	2,425	(2,345)	-96.7%	5,900	(5,820)	-98.6%
Group Link	-	100	(100)	80	2,425	(2,345)	-96.7%	5,900	(5,820)	-98.6%
Total CG-Assimilation	26	1,350	(1,324)	141	4,613	(4,471)	-96.9%	11,400	(11,259)	-98.8%
Group Life Training & Resources	-	-	-	-	-	-	-	-	-	-
L2/L	-	583	(583)	-	1,603	(1,603)	-100.0%	6,996	(6,996)	-100.0%
L2/L Printing	100	1,333	(1,233)	100	3,666	(3,566)	-97.3%	15,996	(15,896)	-99.4%
L2/L Leader Development	-	292	(292)	-	803	(803)	-100.0%	3,504	(3,504)	-100.0%
L2/L Marketing	1,012	417	595	1,177	1,147	30	2.6%	5,004	(3,827)	-76.5%
L2/L Media Reimburse	-	333	(333)	-	916	(916)	-100.0%	3,996	(3,996)	-100.0%
L2/L Partnership Program	1,112	2,958	(1,846)	1,277	8,135	(6,858)	-84.3%	35,496	(34,219)	-96.4%
Total L2/L	-	-	-	178	-	178	0.0%	-	178	0.0%
Leader Development	200	667	(467)	400	1,834	(1,434)	-78.2%	8,004	(7,604)	-95.0%
Contract Labor	434	833	(399)	640	2,291	(1,651)	-72.1%	9,996	(9,356)	-93.6%
Equipment	13	83	(70)	3,854	228	3,626	1588.4%	996	2,858	286.9%
CGLO	227	546	(319)	227	1,502	(1,274)	-84.9%	6,552	(6,325)	-96.5%
Video Projects	-	5,167	(5,167)	162	14,209	(14,047)	-98.9%	62,004	(61,842)	-99.7%
GLLC	20,802	2,708	18,094	24,096	7,447	16,649	223.6%	32,496	(8,400)	-25.8%
S2's	701	250	451	849	688	162	23.6%	3,000	(2,151)	-71.7%
Curriculum Development	-	-	-	26	-	26	0.0%	-	26	0.0%
Online Curriculum Guide	-	125	(125)	-	344	(344)	-100.0%	1,500	(1,500)	-100.0%
Printing	-	267	(267)	-	734	(734)	-100.0%	3,204	(3,204)	-100.0%
Resource Development	-	50	(50)	-	138	(138)	-100.0%	600	(600)	-100.0%
Resource Evaluation	-	125	(125)	-	344	(344)	-100.0%	1,500	(1,500)	-100.0%
Resource Promotion	315	875	(560)	914	2,406	(1,492)	-62.0%	10,500	(9,586)	-91.3%
Dept Supplies	694	708	(14)	694	1,947	(1,253)	-64.4%	8,496	(7,802)	-91.8%
Vol Development	368	383	(15)	603	1,053	(451)	-42.8%	4,596	(3,993)	-86.9%
Telephone/Cell	-	-	-	-	-	-	-	-	-	-

Access Fund

North Point Ministries, Inc.
Profit & Loss Statement
Access Fund
Run On 4/5/2008
3 Months Ended 3/31/2008

Access Fund Projects
2007 Budget - Buckhead Construction/FFE

16,860,794

	Current Month Actual	Current Month Budget	Month Variance	Year To Date Actual	Year To Date Budget	Year To Date Variance	% Diff	Annual Budget	Diff To Date	% Diff
Income										
Access - Alpharetta	11,065	-	11,065	25,977	-	25,977	0.0%	-	25,977	0.0%
Access - Buckhead	87,513	-	87,513	138,626	-	138,626	0.0%	-	138,626	0.0%
Total Income	98,578	-	98,578	164,603	-	164,603	0.0%	-	164,603	0.0%
Expenses										
Administration										
Disability Insurance	6,786	-	6,786	20,357	-	20,357	0.0%	-	20,357	0.0%
Total Administration	6,786	-	6,786	20,357	-	20,357	0.0%	-	20,357	0.0%
Access Fund										
Consultant Fees	-	-	-	87,668	-	87,668	0.0%	-	87,668	0.0%
Total Access Fund	-	-	-	87,668	-	87,668	0.0%	-	87,668	0.0%
Building Design & Construction										
Design										
Architectural	987	-	987	3,237	-	3,237	0.0%	-	3,237	0.0%
Civil engineering	2,380	-	2,380	2,380	-	2,380	0.0%	-	2,380	0.0%
Total Design	3,367	-	3,367	5,617	-	5,617	0.0%	-	5,617	0.0%
Miscellaneous NPCC Projects										
Miscellaneous NPCC Projects	-	-	-	-	-	-	0.0%	-	-	0.0%
Bridge										
Total Bridge	-	-	-	-	-	-	0.0%	-	-	0.0%
Buckhead Church										
Total General Construction	-	-	-	-	-	-	0.0%	-	-	0.0%
Waumba Land										
Total Waumba Land	-	-	-	-	-	-	0.0%	-	-	0.0%
Upstreet										
Total Upstreet	-	-	-	-	-	-	0.0%	-	-	0.0%
Kidstuf										
Total Kidstuf	-	-	-	-	-	-	0.0%	-	-	0.0%
Attic										
Total Attic	-	-	-	-	-	-	0.0%	-	-	0.0%
Starting Point										
Total Starting Point	-	-	-	-	-	-	0.0%	-	-	0.0%
Service Programming Division										
Total Service Programming	-	-	-	-	-	-	0.0%	-	-	0.0%
Information Center										
Information Center	-	-	-	6,239	-	6,239	0.0%	-	6,239	0.0%
Total Information Center	-	-	-	6,239	-	6,239	0.0%	-	6,239	0.0%
Auditorium										
Total Auditorium	-	-	-	-	-	-	0.0%	-	-	0.0%
Administration										
Total Administration	-	-	-	-	-	-	0.0%	-	-	0.0%

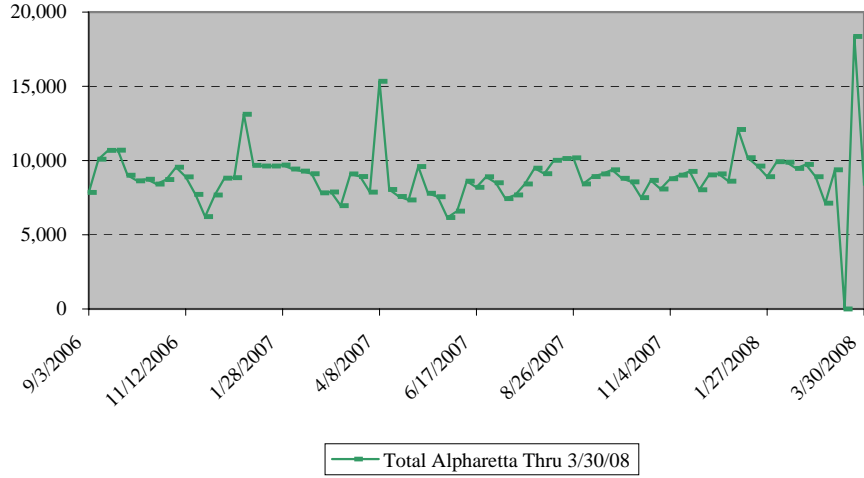


North Point Resources P&L
Run On 4/5/2008
3 Months Ended 3/31/2008

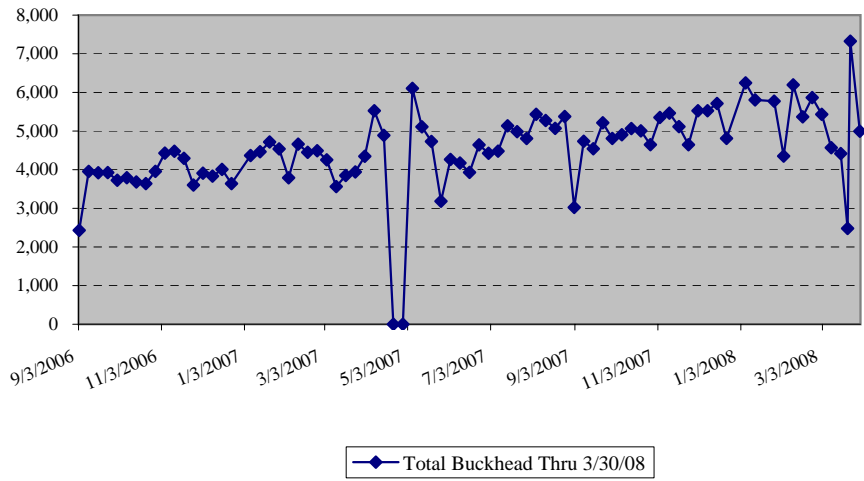
	Current Month Actual	Current Month Budget	Month Variance	Year To Date Actual	Year To Date Budget	Year To Date Variance	% Diff	Annual Budget	Diff To Date	% Diff
Income										
Sales										
Alpharetta Sales	48,885	66,900	(18,015)	167,786	179,600	(11,814)	-6.6%	864,000	(696,214)	-80.6%
Sales - Internet	96,759	133,000	(36,241)	378,332	513,000	(134,668)	-26.3%	1,672,000	(1,293,668)	-77.4%
Buckhead Church Store	25,759	31,100	(5,341)	84,427	101,600	(17,173)	-16.9%	399,100	(314,673)	-78.8%
Browns Bridge Store	13,967	14,600	(633)	38,956	37,000	1,956	5.3%	147,000	(108,044)	-73.5%
Ministry Sales	7,342	8,500	(1,158)	36,229	22,100	14,129	63.9%	85,000	(48,771)	-57.4%
Strategic Partnership	2,724	5,000	(2,276)	18,624	15,000	3,624	24.2%	60,000	(41,376)	-69.0%
Multnomah	-	14,000	(14,000)	12,729	42,000	(29,271)	-69.7%	280,100	(267,371)	-95.5%
Other Outside Sales	28,930	5,000	23,930	48,207	12,000	36,207	301.7%	49,000	(793)	-1.6%
Freight Income	11,493	11,400	93	42,398	44,100	(1,702)	-3.9%	143,800	(101,402)	-70.5%
Total Sales	235,859	289,500	(53,641)	827,687	966,400	(138,713)	-14.4%	3,700,000	(2,872,313)	-77.6%
Cost of Sales										
Cost of Goods Sold	91,888	116,204	(24,316)	329,689	387,332	(57,643)	-14.9%	1,441,484	(1,111,795)	-77.1%
Total Cost of Sales	91,888	116,204	(24,316)	329,689	387,332	(57,643)	-14.9%	1,441,484	(1,111,795)	-77.1%
Gross Profit	143,971	173,296	(29,325)	497,998	579,068	(81,070)	-14.0%	2,258,516	(1,760,518)	-78.0%
Expenses										
Salaries & Benefits										
Wages	46,132	47,552	(1,420)	137,104	142,656	(5,552)	-3.9%	618,174	(481,070)	-77.8%
Employer Expenses	3,385	3,638	(253)	10,068	10,914	(846)	-7.7%	47,294	(37,226)	-78.7%
Workers' Compensation	287	287	-	861	861	-	0.0%	3,444	(2,583)	-75.0%
Group Medical Insurance	6,354	5,340	1,014	17,020	16,019	1,001	6.2%	64,076	(47,056)	-73.4%
Disability Insurance	174	21	153	118	63	55	87.8%	272	(154)	-56.5%
403(b) Match	1,727	1,435	292	5,170	4,305	865	20.1%	18,654	(13,485)	-72.3%
Total Salary & Benefits	58,059	58,273	(213)	170,340	174,818	(4,478)	-2.6%	751,914	(581,574)	-77.3%
General & Administrative Exp.										
Departmental Supplies	1,870	3,450	(1,580)	6,791	9,488	(2,696)	-28.4%	41,400	(34,609)	-83.6%
Volunteer Development	436	740	(304)	1,709	2,085	(376)	-18.1%	50,380	(48,671)	-96.6%
Leadership Development	663	1,083	(420)	1,236	2,978	(1,743)	-58.5%	12,996	(11,760)	-90.5%
Product Development	483	-	483	1,696	-	1,696	0.0%	-	1,696	0.0%
Telephone	65	275	(210)	170	756	(586)	-77.5%	3,300	(3,130)	-94.8%
Mileage	-	85	(85)	-	234	(234)	-100.0%	1,020	(1,020)	-100.0%
Contract Labor	420	-	420	1,365	-	1,365	0.0%	-	1,365	0.0%
Departmental Equipment	572	1,000	(428)	3,369	2,750	619	22.5%	17,810	(14,441)	-81.1%
Legal & Professional Fees	4,665	5,000	(335)	11,253	13,750	(2,497)	-18.2%	40,000	(28,747)	-71.9%
Bank Charges	12,700	8,685	4,015	33,938	26,051	7,888	30.3%	111,000	(77,062)	-69.4%
Total General & Admin Exp.	21,874	20,318	1,556	61,527	58,091	3,435	5.9%	277,906	(216,380)	-77.9%
Advertising & Promotion										
Product Givaways	581	1,500	(919)	995	4,125	(3,130)	-75.9%	18,000	(17,005)	-94.5%
Advertising	6,863	10,000	(3,137)	20,081	37,500	(17,419)	-46.4%	97,000	(76,919)	-79.3%
Total Advertising & Promotion	7,444	11,500	(4,056)	21,076	41,625	(20,549)	-49.4%	115,000	(93,924)	-81.7%

	Current Month Actual	Current Month Budget	Month Variance	Year To Date Actual	Year To Date Budget	Year To Date Variance	% Diff	Annual Budget	Diff To Date	% Diff
Product Development										
Upstreet Track	455	-	455	491	-	491	0.0%	-	491	0.0%
Waumba Land Track	-	5,000	(5,000)	-	10,000	(10,000)	-100.0%	20,000	(20,000)	-100.0%
Middle School Track	-	5,000	(5,000)	-	10,000	(10,000)	-100.0%	20,000	(20,000)	-100.0%
High School Track	-	5,000	(5,000)	-	10,000	(10,000)	-100.0%	20,000	(20,000)	-100.0%
Children's Curriculum	78	-	78	4,498	-	4,498	0.0%	-	4,498	0.0%
Starting Point	-	-	-	-	5,000	(5,000)	-100.0%	10,000	(10,000)	-100.0%
North Point Music	10,038	-	10,038	27,404	-	27,404	0.0%	-	27,404	0.0%
Drama Series Project	-	-	-	-	-	-	0.0%	5,000	(5,000)	-100.0%
General Product Development	3	4,000	(3,997)	3	11,000	(10,997)	-100.0%	48,000	(47,997)	-100.0%
New Publisher Study Guides	-	-	-	-	7,000	(7,000)	-100.0%	8,000	(8,000)	-100.0%
Pastors Message Resources	-	-	-	-	-	-	0.0%	10,000	(10,000)	-100.0%
Charmed	-	-	-	-	1,500	(1,500)	-100.0%	2,000	(2,000)	-100.0%
Curriculum Project 1	1,500	-	1,500	1,500	-	1,500	0.0%	3,000	(1,500)	-50.0%
NP Project 101	-	-	-	-	15,000	(15,000)	-100.0%	20,000	(20,000)	-100.0%
Be Rich	-	-	-	-	17,500	(17,500)	-100.0%	28,000	(28,000)	-100.0%
Curriculum Project 2	-	-	-	-	-	-	0.0%	20,000	(20,000)	-100.0%
Starter Curriculum	-	-	-	786	-	786	0.0%	5,000	(4,214)	-84.3%
Christmas CD Project	-	-	-	-	35,000	(35,000)	-100.0%	45,000	(45,000)	-100.0%
NP Music Development	-	8,000	(8,000)	-	22,000	(22,000)	-100.0%	61,000	(61,000)	-100.0%
Total Product Development	12,074	27,000	(14,926)	34,682	144,000	(109,318)	-75.9%	325,000	(290,318)	-89.3%
Operating Expenses										
Postage	8,445	10,640	(2,195)	29,075	36,440	(7,365)	-20.2%	133,760	(104,685)	-78.3%
Facility Rental	4,739	5,600	(861)	16,011	15,400	611	4.0%	67,200	(51,189)	-76.2%
Repairs & Maintenance	3,194	250	2,944	3,194	688	2,507	364.6%	3,000	194	6.5%
Shipping Supplies	912	1,330	(418)	2,605	4,555	(1,950)	-42.8%	16,720	(14,115)	-84.4%
Total Operating Expenses	17,289	17,820	(531)	50,885	57,083	(6,197)	-10.9%	220,680	(169,795)	-76.9%
Capital Expenditures										
07NPR-Hardware/Software	-	-	-	-	4,375	(4,375)	-100.0%	5,000	(5,000)	-100.0%
07NPR-Web Store Upgrds	(659)	-	(659)	7,691	-	7,691	0.0%	40,000	(32,309)	-80.8%
NPR-Equipment	-	15,500	(15,500)	-	21,775	(21,775)	-100.0%	22,650	(22,650)	-100.0%
NPR-Construction/Improvements	-	3,800	(3,800)	-	4,800	(4,800)	-100.0%	5,800	(5,800)	-100.0%
NPR-Furniture & Fixtures	-	1,200	(1,200)	820	5,450	(4,630)	-85.0%	8,700	(7,880)	-90.6%
Total Capital Expenditures	(659)	20,500	(21,159)	8,511	36,400	(27,889)	-76.6%	82,150	(73,639)	-89.6%
Total Expenses	116,081	155,411	(39,330)	347,021	512,017	(164,996)	-32.2%	1,772,650	(1,425,629)	-80.4%
Other Income										
Other Expenses										
NP Publishing-Transfer	-	-	-	1,623	-	1,623	0.0%	-	1,623	0.0%
Net Profit / Loss	27,890	17,885	10,004	149,355	67,051	82,304	122.7%	485,866	(336,511)	-69.3%

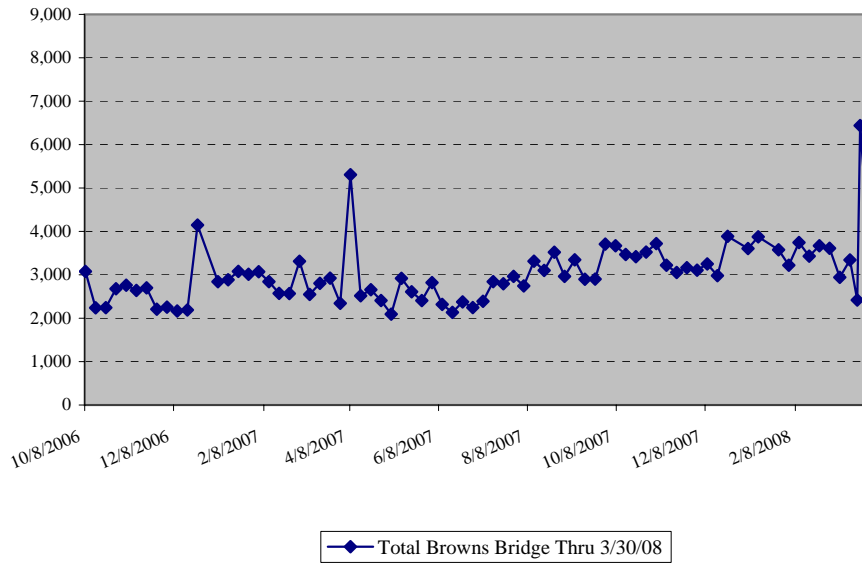
NPCC Attendance



Buckhead Church Attendance

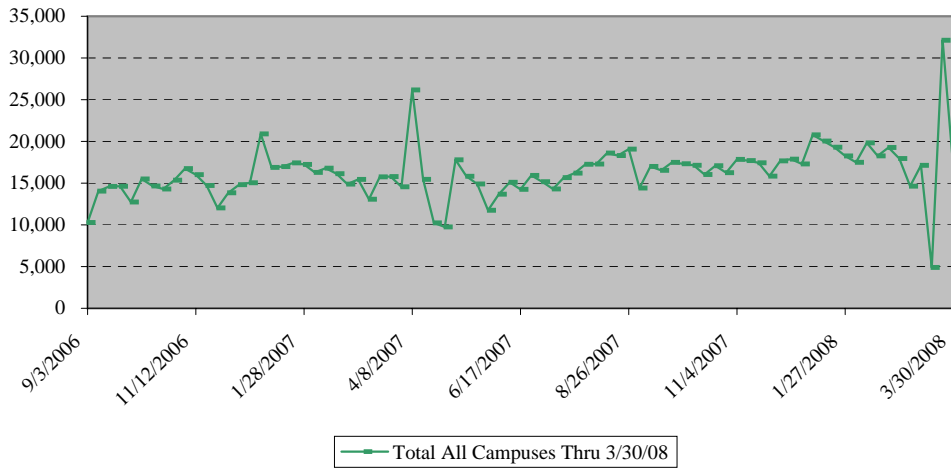


Browns Bridge Attendance



—◆— Total Browns Bridge Thru 3/30/08

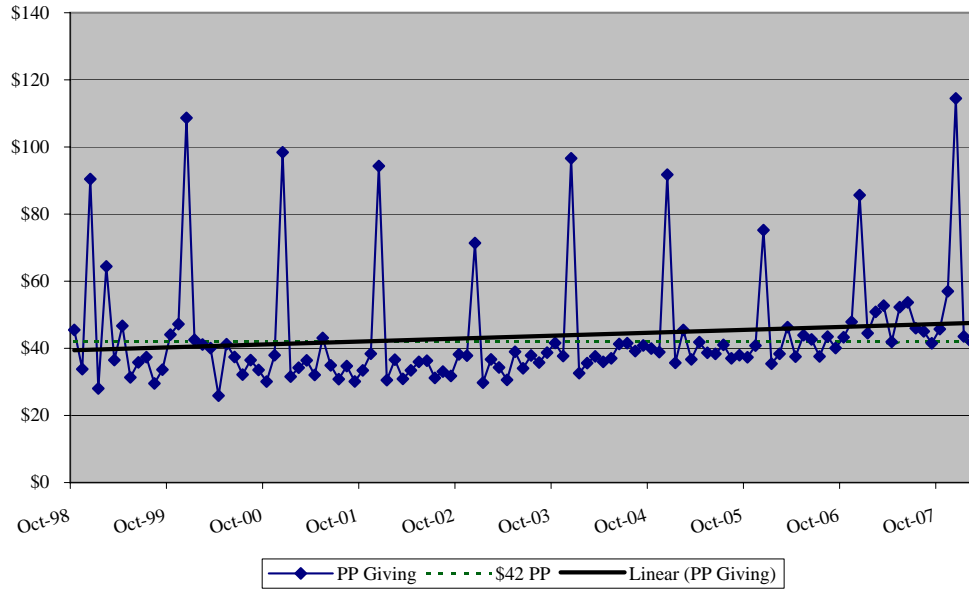
Total NPMI Attendance



—■— Total All Campuses Thru 3/30/08

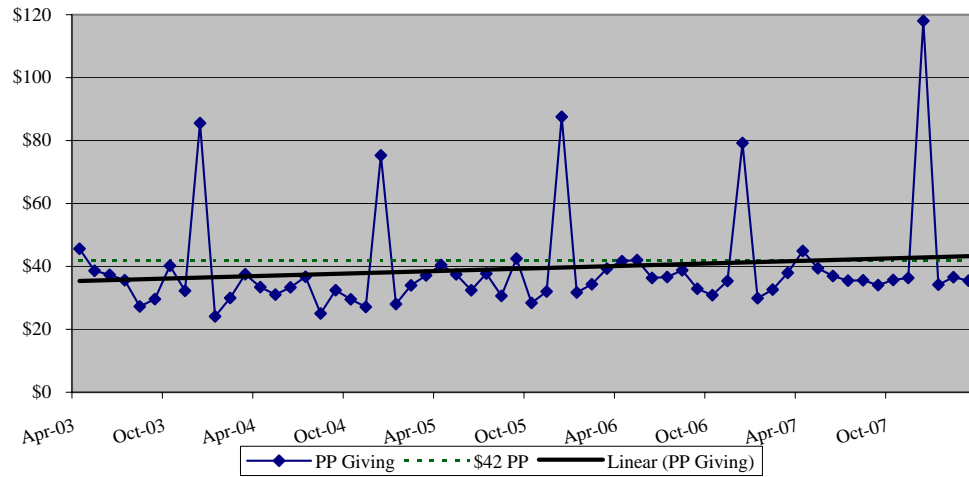
NPCC Per Person Giving

(not including Access giving)



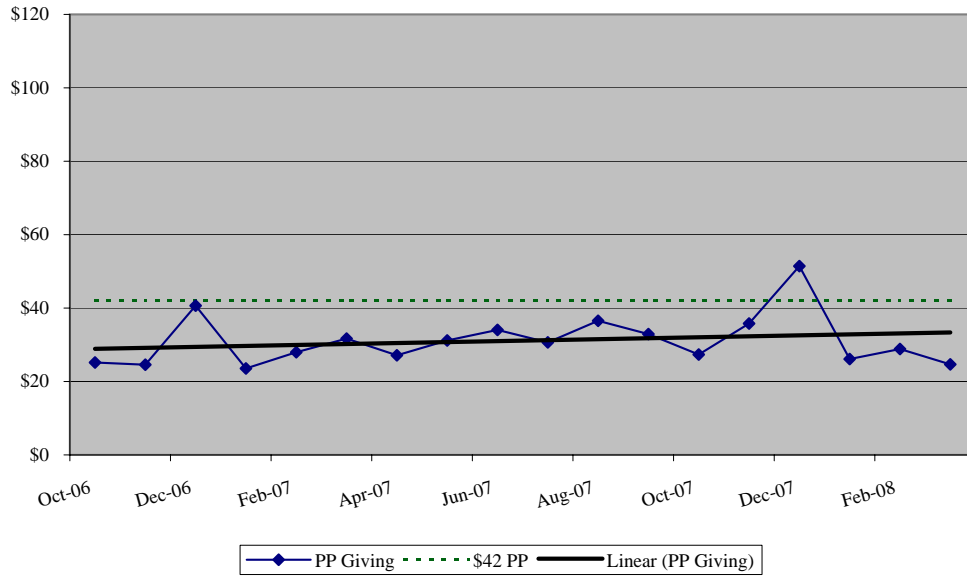
Buckhead Church Per Person Giving

(not including Access giving)



Browns Bridge Community Church Per Person Giving

(not including Access giving)



Total Organization

(including Access, not including Strategic Partner Fund)

